



BILBAO PORT CENTER

Project desing & execution

DID YOU KNOW THAT
THE PORT OF BILBAO...?

- Connects with over 1,000 ports in the world
- Exports and imports more than 1,100 types of merchandise.



ortzadar

VIRTUALWARE



5 Ports
29 CONNECT
641 \$

CONVENTIONAL MERCHANT
ty, tools and spe
thes, Legro

PORT CENTER & ITSASMUSEUM

Complementary projects:

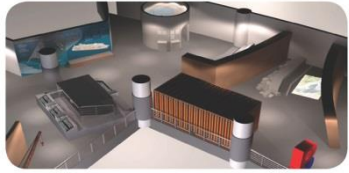
The museum tells us **what we are:**
heirs of a past around the estuary and
Bilbao.

Port Center tells us about **the present
and the future with the Port** of Bilbao
as a driving force.





PROJECT KEYS



INTEGRATED



ADAPTED TO ALL AUDIENCES



EASILY UPDATABLE



**LOW MAINTENANCE AND
MANAGEMENT COSTS**



**CONCEIVED WITH RESPECT FOR THE
ENVIRONMENT**



**CONCEIVED FROM THE POINT OF VIEW OF
SAFETY AND PATROMONIAL RESPECT**





GOALS

PORT CENTER

To achieve a **greater link with the environment**

→ Port of Bilbao as a strategic element of the country's economy

Highlighting its economic and social importance

- operational reality
- all the activities carried out there
- its future development

MISSION

1. Disseminate in an interactive and attractive way the mission and functioning of Bilbao Port among the visiting population

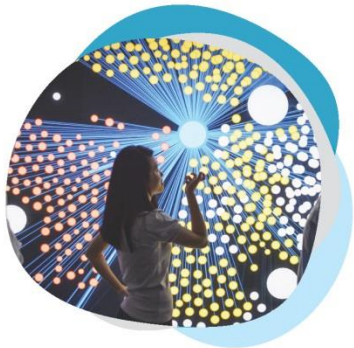
2. Raise awareness of the importance of the economic activity of the Port of Bilbao and its impact on citizens as a whole.



3. Create and participate interactively in the different networks around the socioeconomic fabric of the Port and the Estuary.

CONTENT DISTRIBUTION

Bilbao Port working for SUSTAINABLE DEVELOPMENT OF BIZKAIA



ECONOMIC
SUSTAINABILITY



SOCIAL
SUSTAINABILITY

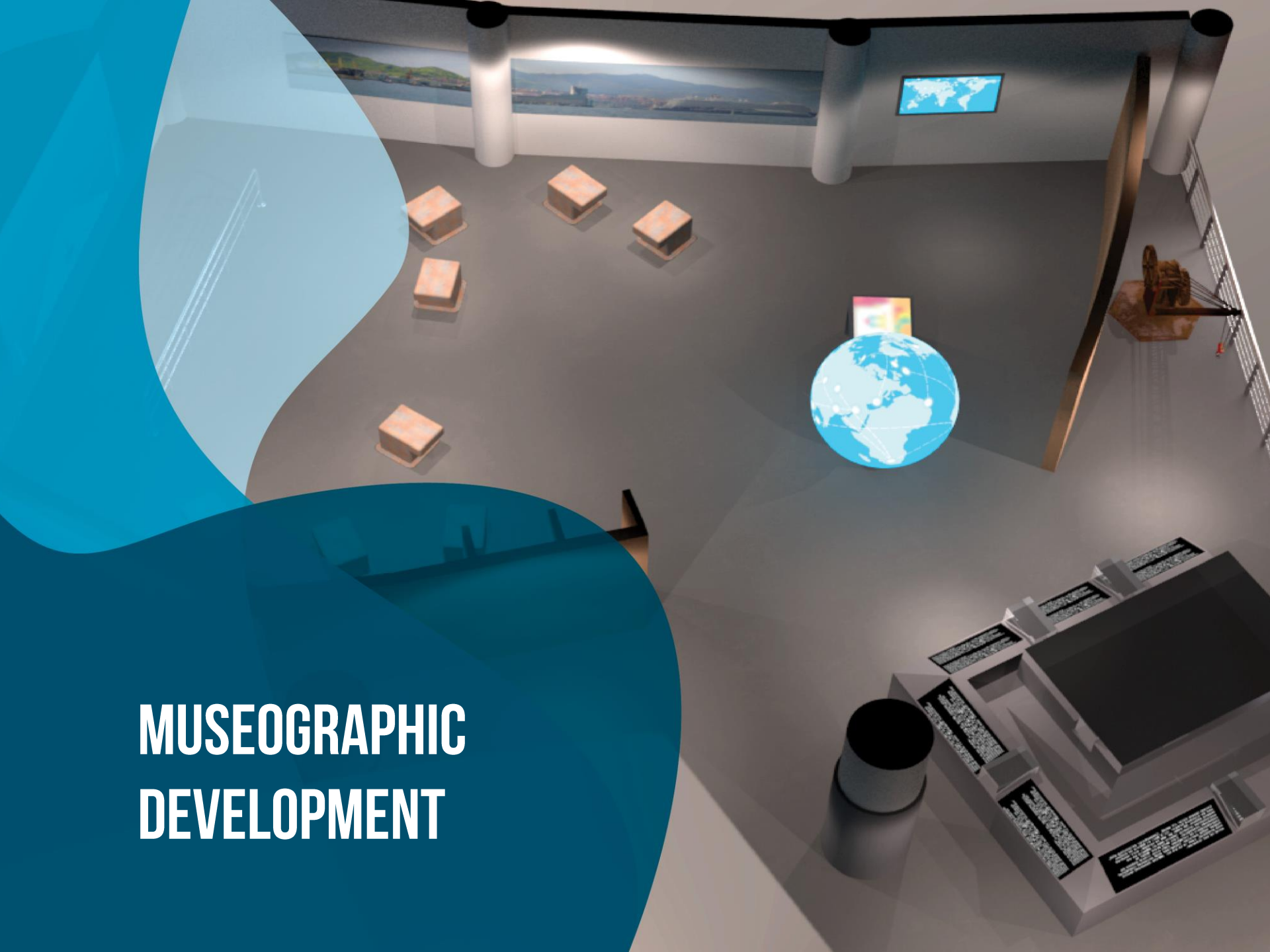


ENVIRONMENTAL
SUSTAINABILITY



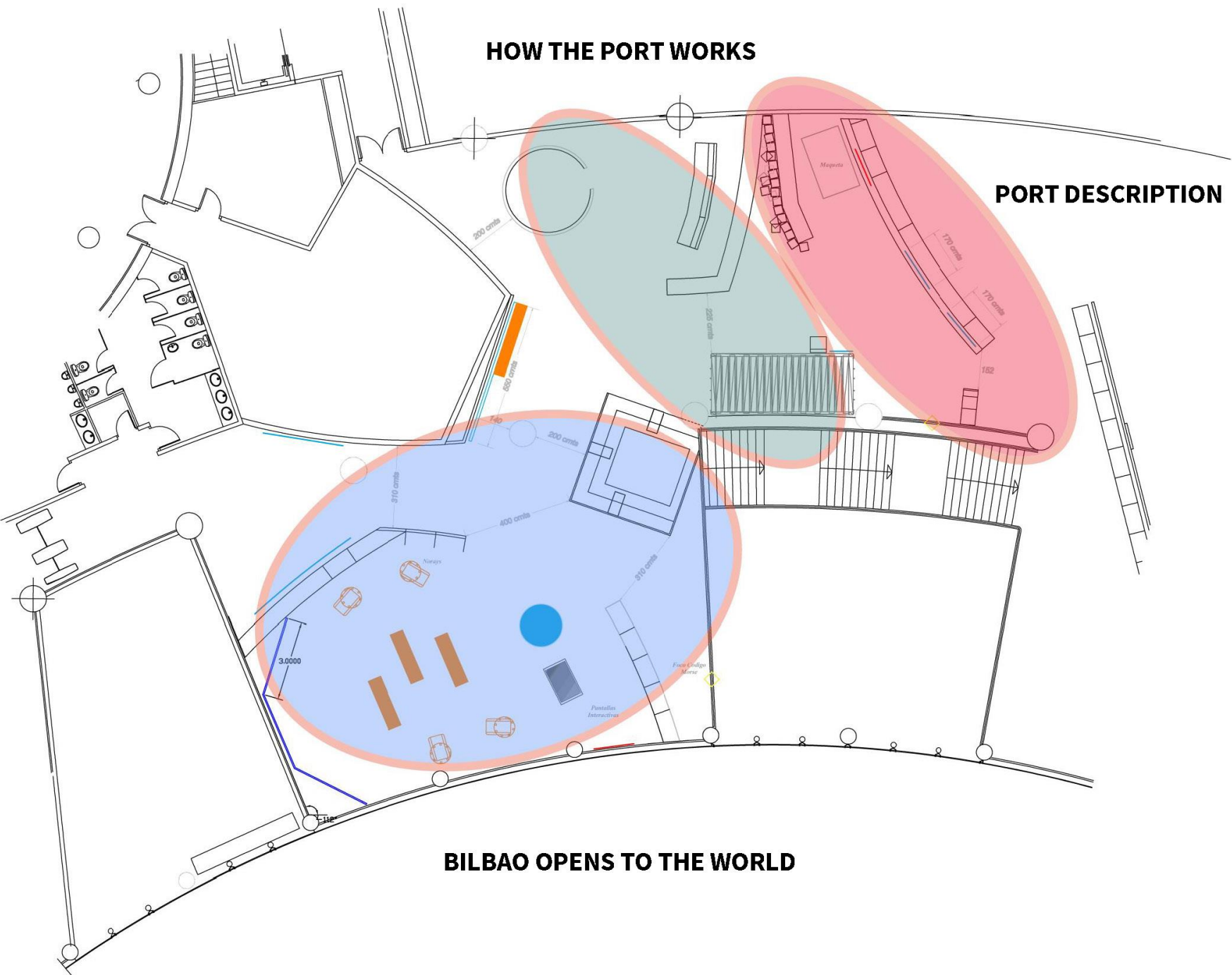
CULTURAL
SUSTAINABILITY

MUSEOGRAPHIC DEVELOPMENT



HOW THE PORT WORKS

PORT DESCRIPTION



BILBAO OPENS TO THE WORLD

CRITICAL ISSUES

ADAPTATION of the exhibition to the assigned surface and existing installations (lighting, sockets, air-conditioning outlets...)

The museum continues its activity during assembly:

- The time must be fitted, and the actions coordinated
- Certain activities take place outside opening hours

Insertion in the new exhibition of fixed elements from the previous exhibition.



SCENOGRAPHIC REINFORCEMENT ELEMENTS (FROM THE GROUND FLOOR)



1. ENTRANCE





**PORT CENTER
DEFINITION**

PORT CENTER

Centro de Interpretación
del Puerto de Bilbao

Bilboko Portuaren
Interpretazio Zentroa

Port of Bilbao
Interpretation Centre

1. ENTRANCE



2. PORT DESCRIPTION



VIDEOMAPPING

- Conditions of Abra
- The Port today
- Port companies
- Client

TV



ECONOMIC
IMPORTANCE
OF THE PORT



SCALE MODEL





2. PORT DESCRIPTION

BILBOKO PORTUAK 11.500 LANPOSTU MANTENTZEN ETA EGUNEROKO INTENSIOA 800-900 MILIAR EUROKO SORBERAN LAN DUNTZEN DU

EL PUERTO DE BILBAO CONTRIBUYE AL MANTENIMIENTO DE 11.500 EMPLEOS Y A LA GENERACION DE 800 MILLONES DE EUROS ANUALES EN EL PIB DE EUSKADI

THE PORT OF BILBAO CONTRIBUTES TO THE MAINTENANCE OF 11,500 JOBS AND THE GENERATION OF 800 MILLION EUROS PER YEAR IN THE GDP OF EUSKADI

Funtzeko gune bat

Un enclave fundamental

An essential enclave

**MOTOR EKONOMIKOIA
MOTOR ECONOMICO
ECONOMIC ENGINE**



**BILBOKO PORTUA
EL PUERTO DE BILBAO
BILBAO PORT**

Arku Atlantikoko gune intermedial, logistiko eta industrial nagusia

Principal centro intermodal, logístico e industrial del Arco Atlántico

The Atlantic Arco principal intermodal, logistic and industrial centre



3. PROFESSIONS

CONTROL CENTER

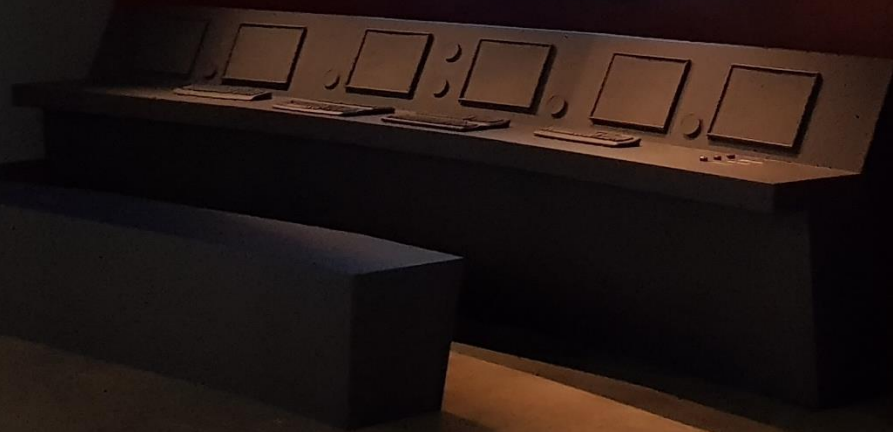
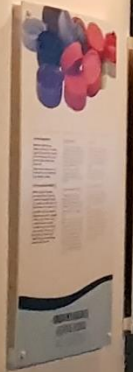
VIDEOWALL

CONTROL DESK

Captain, practical work, towing and mooring, inspection agents, health promotion...



3. PROFESSIONS



4. ENERGY HUB

BULK DEPOSIT

ENERGY COMPANIES OF BILBAO PORT

- Business fabric in the energy pole of Bilbao Port
- Place of occupation of the different companies
- Production capacity
- Supply methods
- Methods for shipping products
- Wind energy

4. ENERGY HUB

INIALES

EXEFIZIENTIA
EFFICIENTIA
EFFICIENCY

MAIN ENERGY PARK OF THE ATLANTIC ARCH

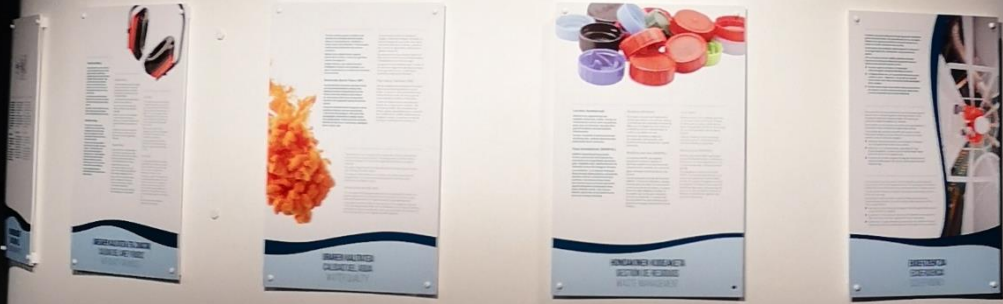


5. ENVIRONMENTAL SUSTAINABILITY

TOPICS

- Air quality
- Water quality
- Noise
- Waste management
- Eco-efficiency
- MARPOL Convention

4. ENERGY HUB



4. ENERGY HUB



6-7. GOODS TRANSIT



6-7. GOODS TRANSIT - CONTAINER

3D ANIMATION

- Loading and unloading of goods
- Different controls of goods in the port
- Transit of goods within the port
- Professionals and machinery involved in the process



6-7. GOODS TRANSIT

MERKANTZIA GARRAHAREN IRABULTZA:
EDUKIONTZIA
LA REVOLUCIÓN EN EL TRANSPORTE DE MERCANCIAS:
EL CONTENEDOR
MULTIPLYING UP GOODS TRANSPORTATION:
THE CONTAINER



The infographic features a photograph of a large container ship at sea. Below the photo is a circular diagram illustrating the layout of a container terminal, showing various storage areas and loading zones. The text is presented in both Spanish and English.



PSSU 343438 1
22G1



8. GOODS TRANSIT – LOADING A VESSEL

Interactive game that allows us to carry out the loading of a ship by means of the manipulation of a crane.



FEEDER ITSASONTZIA

130 - 250m
LUZERA

20m
ZABALERA

500 - 4.000 TEU
ZAMA-EDUKIERA



ITSASONTZI OZEANIKOA

260m
LUZERA

30m
ZABALERA

4.000 - 8.000 TEU
ZAMA-EDUKIERA



OZEANOZ HARAINDIKO ITSASONTZIA

300 - 400m
LUZERA

43 - 60m
ZABALERA

> 8.000 TEU
ZAMA-EDUKIERA



9. TRANSIT OF PEOPLE

Functioning and infrastructures for passenger transit in Bilbao Port: maritime stations, works and investments, etc.

ITSAS BIDAIARIEN TERMINALA
TERMINAL MARITIMA DE CRUCEROS
TERMINAL MARITIME OF CRUISES

PUERTO DE BILBAO
Una parada ineludible en la ruta del Arco Atlántico

PORT BILBAO
una parada ineludible en la ruta del Arco Atlántico

A LA VANGUARDIA DE LAS TERMINALES EUROPEAS

A LA VANGUARDIA DE LAS TERMINALES EUROPEAS

A LA VANGUARDIA DE LAS TERMINALES EUROPEAS

MEM SIN EXPERICH SICHI, 1900
Mem sin experech sichi, 1900. Añitator aut valente valentis anitit, valerempates dilanda sio valentis que quodda pra dicitur hitate fia. Scantis sibus re non reppit iberancimas aut valentis.

MEM SIN EXPERICH SICHI, 1900
Mem sin experech sichi, 1900. Añitator aut valente valentis anitit, valerempates dilanda sio valentis que quodda pra dicitur hitate fia. Scantis sibus re non reppit iberancimas aut valentis.

MEM SIN EXPERICH SICHI, 1900
Mem sin experech sichi, 1900. Añitator aut valente valentis anitit, valerempates dilanda sio valentis que quodda pra dicitur hitate fia. Scantis sibus re non reppit iberancimas aut valentis.

MEM SIN EXPERICH SICHI, 1900
Mem sin experech sichi, 1900. Añitator aut valente valentis anitit, valerempates dilanda sio valentis que quodda pra dicitur hitate fia. Scantis sibus re non reppit iberancimas aut valentis.

MEM SIN EXPERICH SICHI, 1900
Mem sin experech sichi, 1900. Añitator aut valente valentis anitit, valerempates dilanda sio valentis que quodda pra dicitur hitate fia. Scantis sibus re non reppit iberancimas aut valentis.

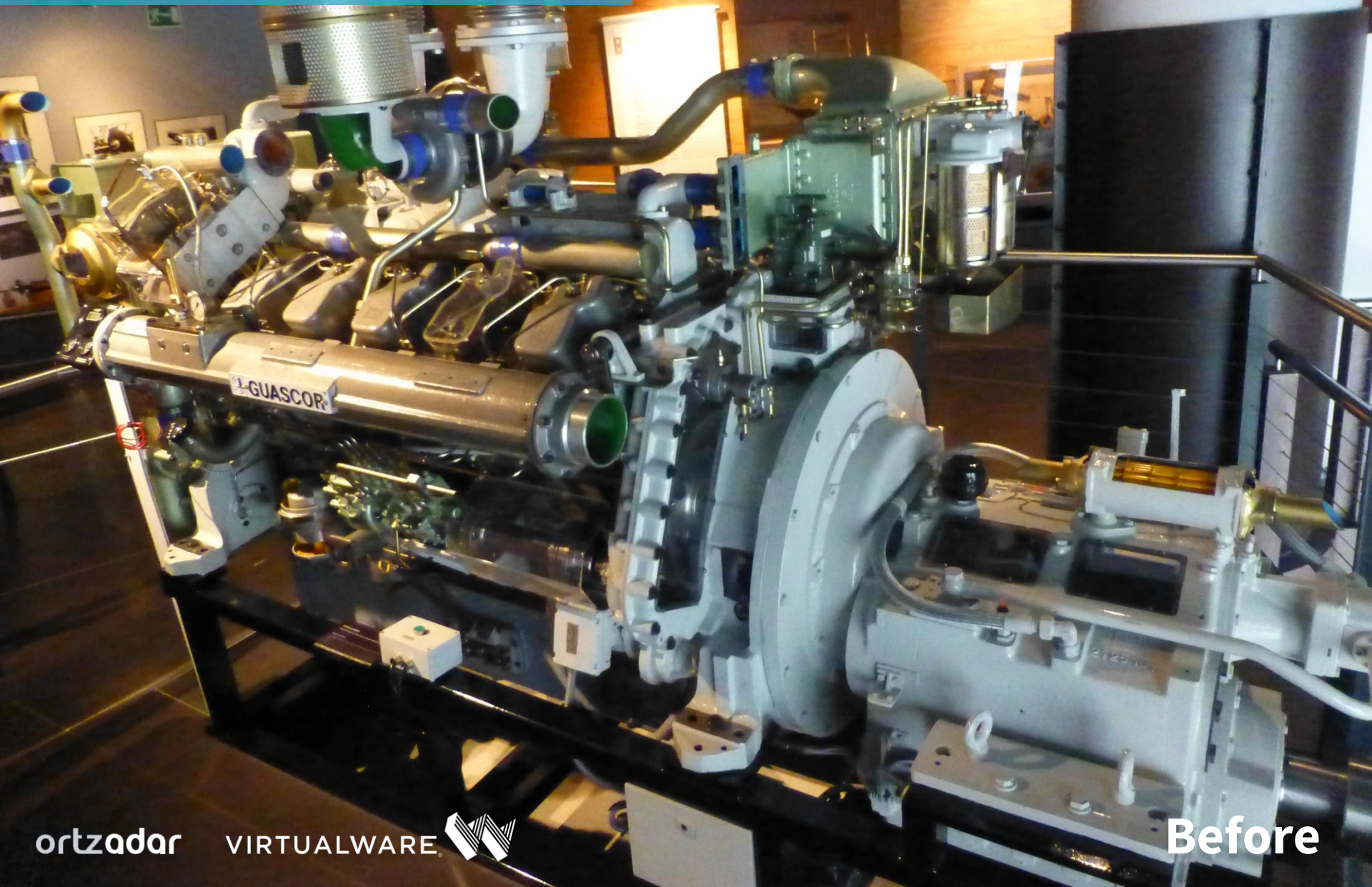
MEM SIN EXPERICH SICHI, 1900
Mem sin experech sichi, 1900. Añitator aut valente valentis anitit, valerempates dilanda sio valentis que quodda pra dicitur hitate fia. Scantis sibus re non reppit iberancimas aut valentis.



9. TRANSIT OF PEOPLE



10. GUASCOR ENGINE





10. GUASCOR ENGINE



11. PIRATE GYMKHANA

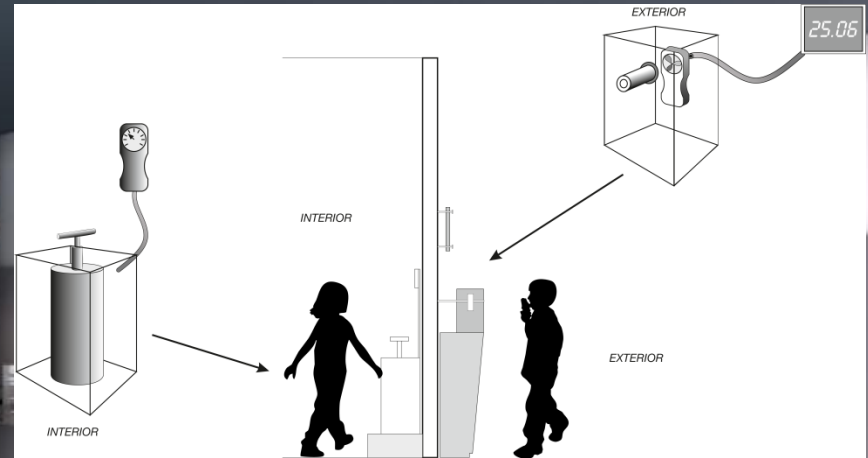


MARINE LIGHTS

Morse code
transmission



MECHANICAL INTERACTION



11. PIRATE GYMKHANA



12. COMMERCIAL ROUTES





MAIN ROADS

**MULTITOUCH
GAME**

12. COMMERCIAL ROUTES



13. CULTURAL SUSTAINABILITY

EMOTION AS LANGUAGE

- Heritage elements
- Idiosyncrasy
- Cosmopolitan Bilbao
- Lover of its traditions

NORAYS

MOBILE BENCHES

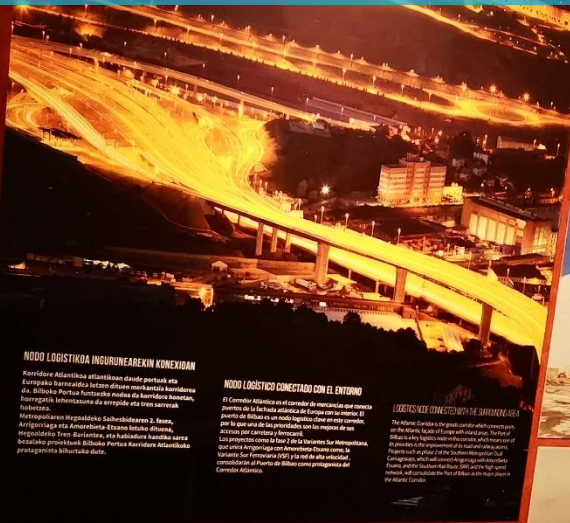
13. CULTURAL SUSTAINABILITY



14. PROA TO THE FUTURE



14. PROA TO THE FUTURE



NODO LOGÍSTICO EN EL CARRIL DE INGENIEROS DE BILBAO

El Carril de Ingenieros de Bilbao es un proyecto de infraestructura que conecta el puerto de Bilbao con el resto de Europa a través del corredor de la línea atlántica de Europa con el objetivo de mejorar la eficiencia de los procesos de transporte y reducir los costes de transporte.

Los proyectos como la fase 2 de la Variante Sur Meridional, que une el puerto con el corredor de la línea atlántica de Europa, mejorará la eficiencia de los procesos de transporte y reducirá los costes de transporte.



PORTS ADIMENTSIAK / SMART PORTS

Las tecnologías de punta en el sector portuario están permitiendo a los puertos ser más eficientes y sostenibles. Gracias a la tecnología de punta, los puertos pueden operar de manera más eficiente y sostenible, reduciendo los costes de operación y mejorando la experiencia de los clientes.

SMART PORTS

The smart ports of the future will be more efficient and sustainable. Thanks to cutting-edge technology, ports can operate more efficiently and sustainably, reducing operating costs and improving the customer experience.



HAIZEA WIND GROUP

El Grupo Haizea Wind es un líder en el sector de la energía eólica en España. El grupo cuenta con una flota de parques eólicos que generan energía limpia y sostenible para el país.



EL PUERTO DE BILBAO: UNO DE LOS MEJORES PUERTOS DEL MUNDO

El Puerto de Bilbao es uno de los mejores puertos del mundo gracias a su infraestructura avanzada y su capacidad para manejar grandes volúmenes de mercancía.

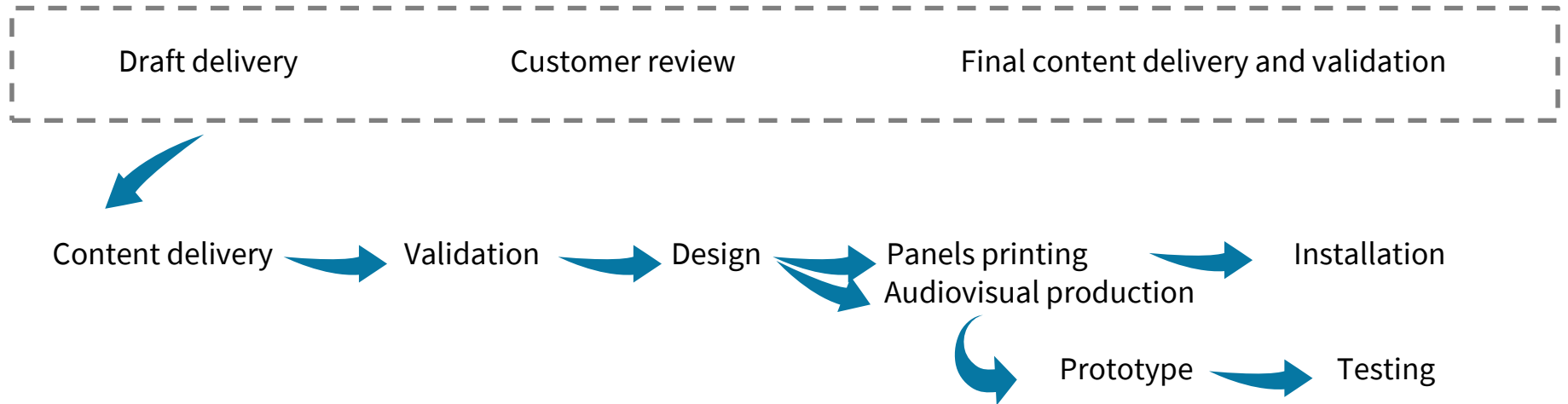


EL PUERTO DE BILBAO: UNO DE LOS MEJORES PUERTOS DEL MUNDO

El Puerto de Bilbao es uno de los mejores puertos del mundo gracias a su infraestructura avanzada y su capacidad para manejar grandes volúmenes de mercancía.

WORKING METHOD

**Coordination between Company and Port Authority.
Compliance with the time-schedule.**



Delivery of the work before the planned deadline

PORT CENTER & ITSASMUSEUM

Talking about the present in a museum is a great value

- Educational programme: increased age of visits (vocational training, employment, Port world)
- Involvement of the Port community with its museum
- Aligned with the museum's new strategy: not only the estuary but also the coast of Bizkaia



THANK YOU VERY MUCH!

ESKERRIK ASKO!

¡MUCHAS GRACIAS!

ortzadar

VIRTUALWARE

