



# How to Improve the Efficiency of the Technical Nautical Chain



**Stein Inge Dahn**  
President of EMPA,  
*European Maritime  
Pilots' Association*



**EMPA**

# ***European Pilotage: A Public Service...***

- ***Efficient and safe pilotage***
- ***Safety at Sea***
- ***Protection of the Marine Environment***
- ***Security in European Ports and Fairways***
  - ***On behalf of society***
  - ***With full integrity***
  - ***Free of commercial pressure***



EMPA



# *How to Improve the Efficiency of the Technical Nautical Chain?*

EUROPEAN MARITIME PILOTS' ASSOCIATION



EMPA



*...the Technical Nautical Chain*



**EMPA**

# ***European Pilotage: A Public Service...***

- ***Efficient and safe pilotage***
- ***Safety at Sea***
- ***Protection of the Marine Environment***
- ***Security in European Ports and Fairways***
  - ***On behalf of society***
  - ***With full integrity***
  - ***Free of commercial pressure***



EMPA

# *European Pilotage: A Public Service...*

- ***Efficient and safe pilotage***
- ***Safety at Sea***
- ***Protection of the Marine Environment***
- ***Security in European Ports and Fairways***
  - ***On behalf of society***
  - ***With full integrity***
  - ***Free of commercial pressure***



EMPA



YES

EUROPEAN MARITIME PILOTS' ASSOCIATION



EMPA



YES WE CAN

EUROPEAN MARITIME PILOTS' ASSOCIATION



EMPA



EUROPEAN MARITIME PILOTS' ASSOCIATION



EMPA



YES WE CAN

EUROPEAN MARITIME PILOTS' ASSOCIATION



EMPA



*...the Technical Nautical Chain*



# EMPA



EUROPEAN



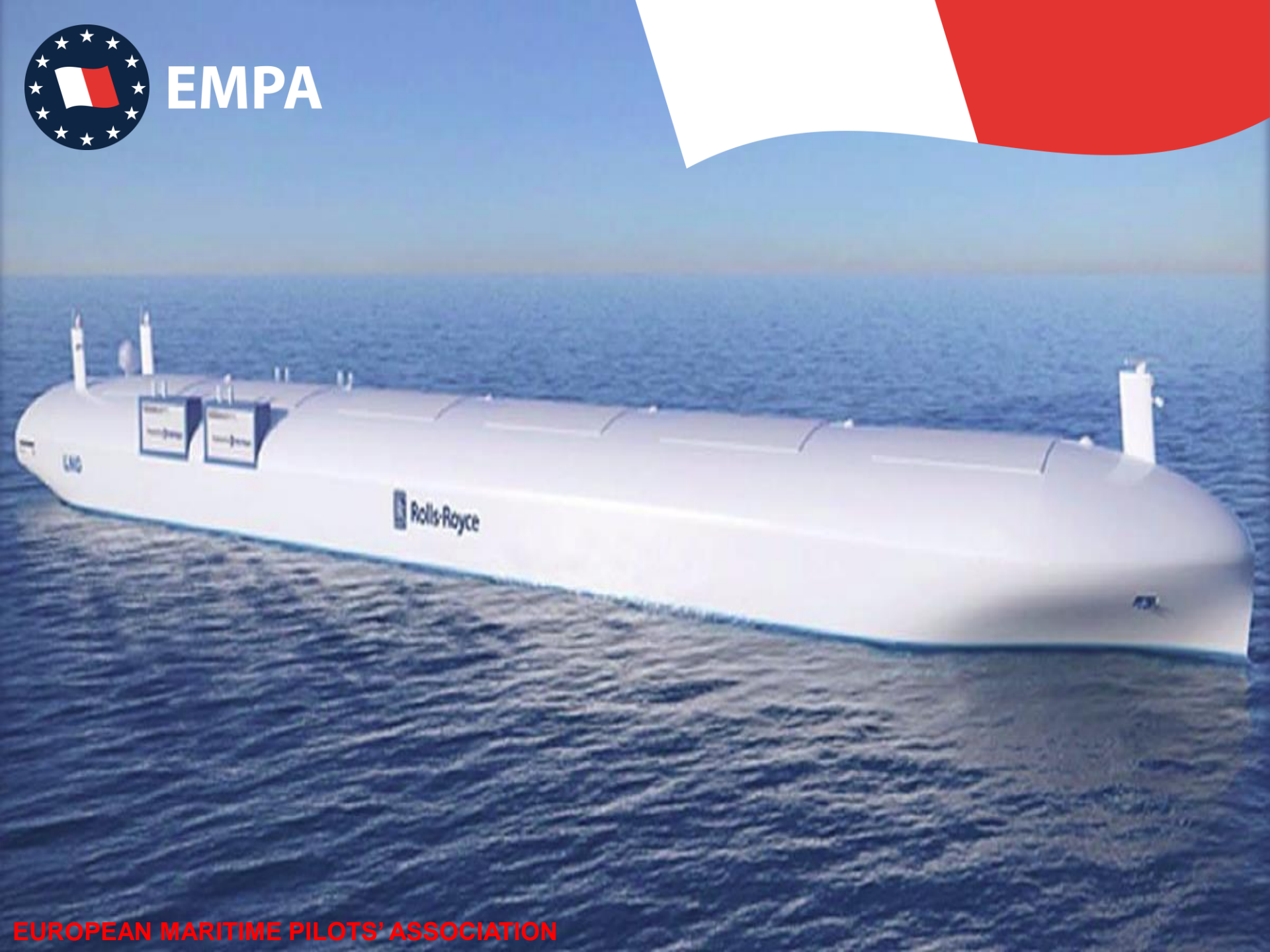
EMPA



EUROPEAN MARITIME PILOTS' ASSOCIATION



EMPA



EUROPEAN MARITIME PILOTS' ASSOCIATION



# EMPA



EUROPEAN MARITIME PILOTS' ASSOCIATION



# EMPA





# EMPA



EUROPEAN MARITIME PILOTS' ASSOCIATION



EMPA



NO!

EUROPEAN MARITIME PILOTS' ASSOCIATION



- Zoom Out
- Zoom To
- Centre
- Reset
- Refresh
- Bearing/ Distance
- CPA/ TCPA
- Set Goal
  - Area
  - Ship

Scale  
1:16865



Condition

project	: projects/27682_maasvlakte_2_april_2014
condition	: cond_006_mp_mp_ne.cnd
runnumber	: 45

OK



- Zoom Out
- Zoom To
- Centre
- Reset
- Refresh

Bearing/  
Distance

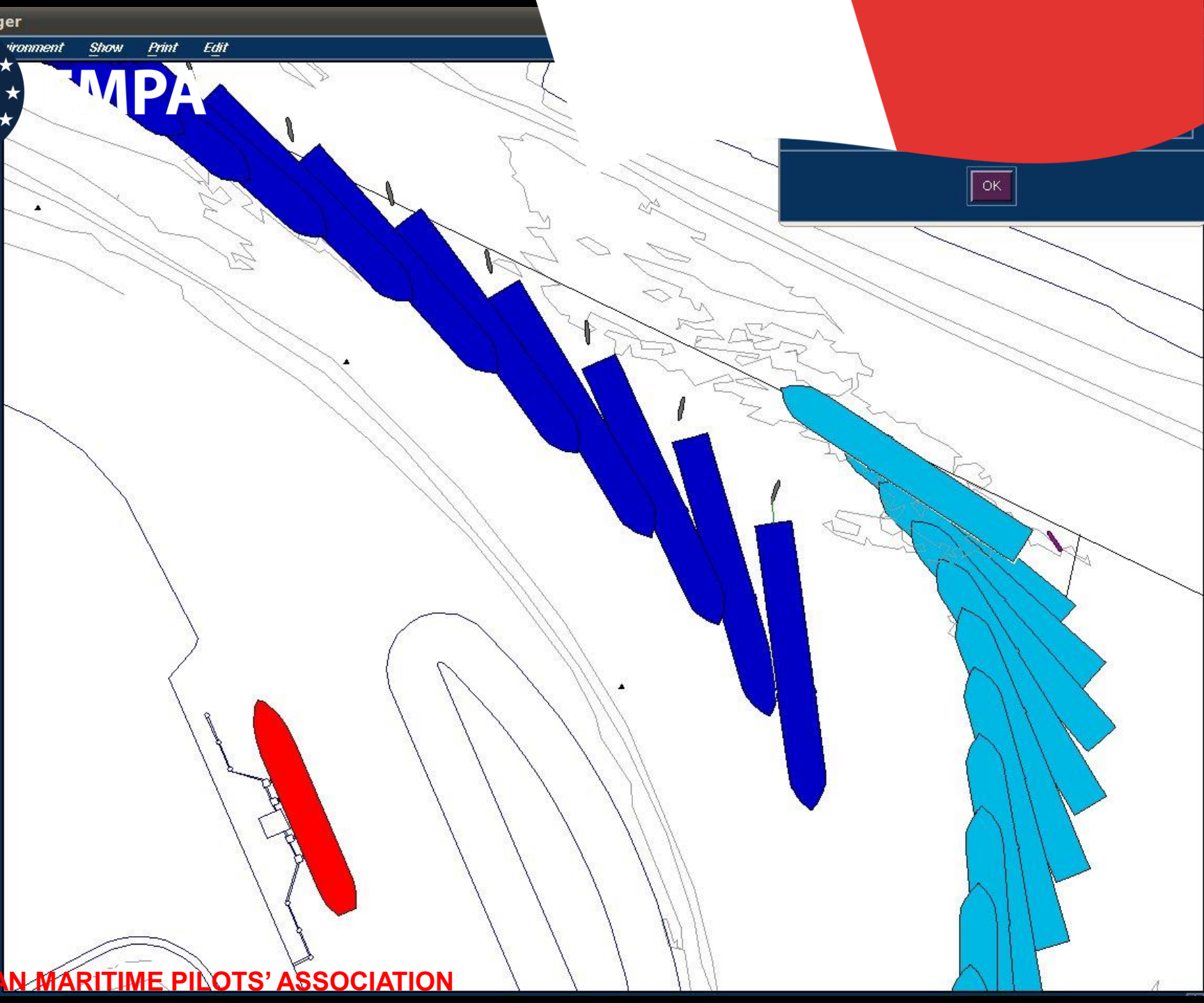
CPA/  
TCPA

Set Goal

- Area
- Ship

Scale

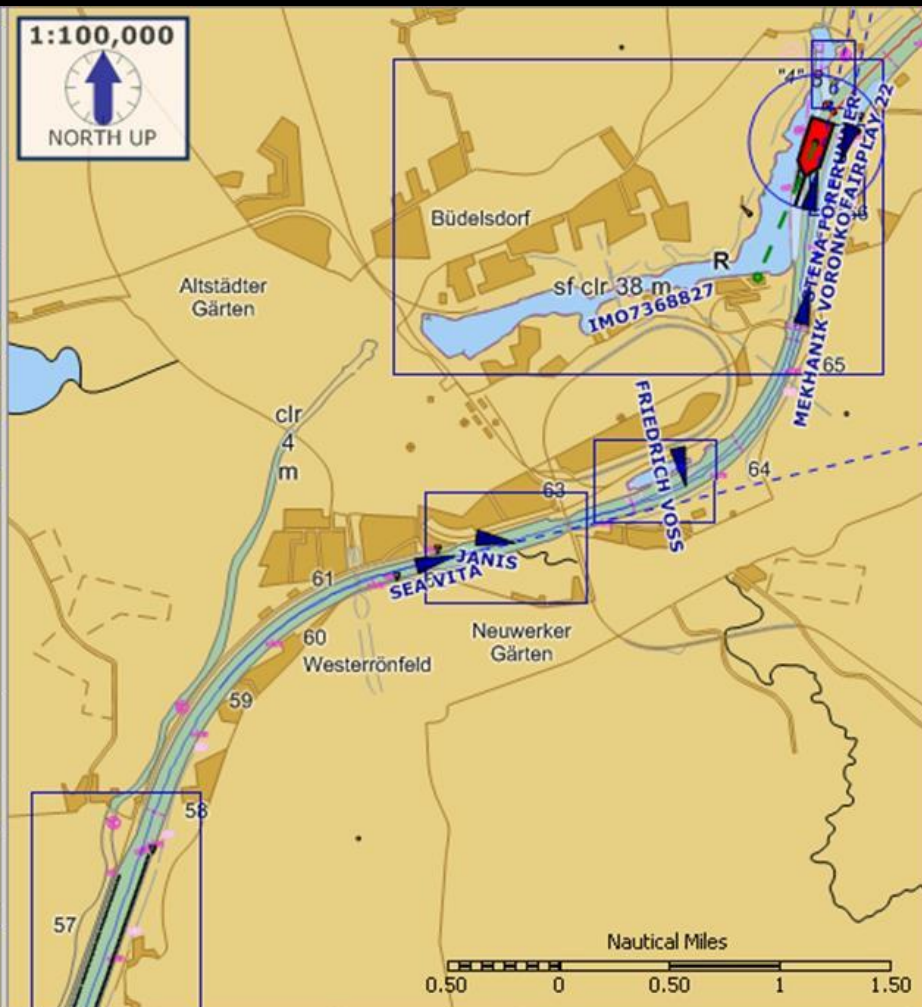
1:5287



OK



# EMPA



Sunday, February 26 16:25:19

Data Console

SOG 2.60 kn

GPS Status GPS FIX

54°19.313'N

009°42.850'E

COG 203°T

HDG 198°T

Properties

Activate  
Route

Split Three  
Ways

Dusk Colors

Detail

Scale

Guide Book

Planning  
Mode

Back

54°16.562'N 009°40.349'E (207°T 3.11 NM from boat)

GPS FIX

EUROPEAN MARITIME PILOTS' ASSOCIATION



EMPA

# Thank you for your attention!



EUROPEAN MARITIME PILOTS' ASSOCIATION