

The Pumphouse Presents

Lar Joye,
Port Heritage Director,
Port Heritage & Communications Dept,



Dublin Port Company

Your Port, Your Future

1. Dublin Port
2. Dublin Port Distributed Museum Network
3. The Pumphouse Presents

DUBLIN PORT ACCOUNTED FOR 80% OF CONTAINERISED TRADE 2022



Source IMDO	Containerised		Bulk	
	RoRo	LoLo	Bulk Liquid	Dry Bulk
Dublin	83%	72%	37%	12%
Cork	1%	24%	49%	8%
Rosslare	16%			
Waterford		4%		9%
Galway			3%	1%
Shannon / Foynes			12%	56%
Drogheda		Bulk Liquid		5%
Greenore				7%
New Ross				2%
	100%	100%	100%	100%

STRONG GROWTH IN 2022 - BACK TO 2019 RECORD HIGH



GROWTH YEAR-ON-YEAR



TOTAL THROUGHPUT
IN GROSS TONNES



NUMBER OF PASSENGERS



SHIP ARRIVALS



TRADE VEHICLES



TOURIST VEHICLES



IMPORTS



INCREASE



+4.9%

TOTAL IN
GROSS TONNES



22.3m

EXPORTS



INCREASE



+5.8%

TOTAL IN
GROSS TONNES



13.7m

THE PORT, PORT TUNNEL & M50 ARE INEXTRICABLY LINKED



73%

of the HGVs
have an origin
or destination
within 90km of
Dublin Port

60%

within 40kms



GEOGRAPHICAL CONSTRAINTS TO THE EAST & WEST

Masterplan 2040 Seeks to Develop Existing lands

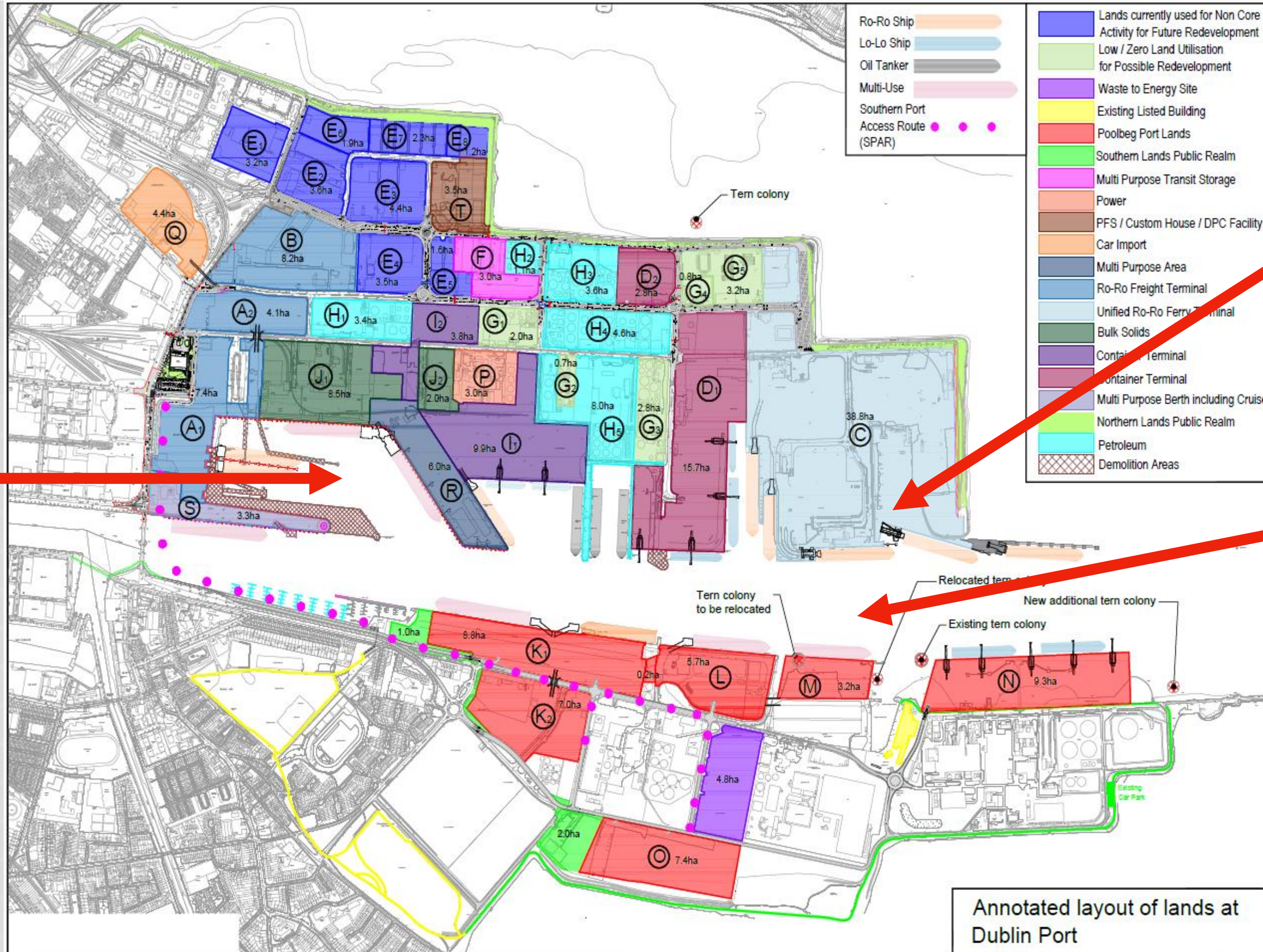


GEOGRAPHICAL CONSTRAINTS TO THE EAST & WEST

Masterplan 2040 Seeks to Develop Existing lands



Masterplan 2040: Improving the capacity and connectivity but not expanding



Master Plan 2 MP2

- 2020-2035
- €450m
- New RoRo & LoLo berths for larger ships

3rd & Final Masterplan 3FM

- €600m tbd
- New Southern Port Access Road
- Relocate LoLo operations
- New export and Import areas
- New RoRo area
- Ship Turning Circle
- Extensive community gain & Active Travel
- New boat club

Alexandra Basin Regeneration AB

- 2015-2025
- €360m
- Deepen Channel & berthing pockets for larger vessels
- New Berths
- Strengthen pier walls

Dublin Port Distributed Museum Network



ROUTES

- From Diving Bell to Berth 18 - 1.2km
- Liffey-Tolka Pedestrian and Cycle Route - 1.4km
- Detour to The Pumphouse and The Flour Mill - 0.5km
- Tolka Estuary Greenway - Phase 1 - 1.9km
- Tolka Estuary Greenway - Phase 2 - 1.3km

LANDMARKS

- | | |
|---|-----------------------------------|
| 1 Diving Bell | 6 Port Centre |
| 2 Scherzer Bridge | 7 Maritime Garden |
| 3 Crane 290 | 8 The Victorian Substation |
| 4 Blood Stoney Blocks Installation | 9 The Pumphouse |
| 5 Crane 292 | 10 The Flour Mill |



16.5 Kms of Active travel and Greenways



37

OPENING UP THE PORT





Tolka Estuary Greenway opening in the summer of 2024



THE DIVING BELL EXHIBITION - DUBLIN'S SMALLEST MUSEUM



- The first stop on the Port's Distributed Museum walk.
- The Diving Bell was used in the Port's quay walls from the Victorian era right up until the 1960s.
- The Bell is 13m tall, weighs 90 tonnes.
- Underneath it now houses an exhibition on its social, historical and engineering significance, publicly accessible on Dublin's quays.
- Central location emboldens connections between Port and City.

THE REDBRICK SUBSTATION & EXHIBITION CENTRE



- Further east and on the grounds of Port Centre is the former Redbrick Substation, now being developed into an exhibition space.
- Part of the Port's original Sea Wall dating back to the 1720s was recently discovered underneath.
- Artefacts were uncovered and preserved, including dockworker pipes, shoes, and 19th-century pottery fragments.
- To be opened to the public as part of the distributed museum next month, where visitors can gain insight into the history hidden beneath their feet.

NEW ARTISTS' STUDIOS - THE FLOUR MILLS

50 STUDIOS, MULTIPLE DISCIPLINES



NEW MARITIME VILLAGE WITH PUBLIC ACCESS



COMMUNITY - The Heart of our Community



- Dublin Port Company recognises its role in the local communities with which it has strong connections over past generations and the community programme comprising 3 elements of sponsorship for these local communities education, community events and sports.
- Sponsorship takes the form of Multi-annual support (for example, sports club sponsorships) and One-off events or projects (such as the provision of equipment to local schools or support for a one off sports event).
- In 2022 the Dublin Port Scholarship programme celebrated 21 years, Since 2001, the programme has awarded more than €1.2 million to 1250 applicants living in the port area, enabling them to progress to third level education.

THE PUMPHOUSE PERFORMANCE CENTRE

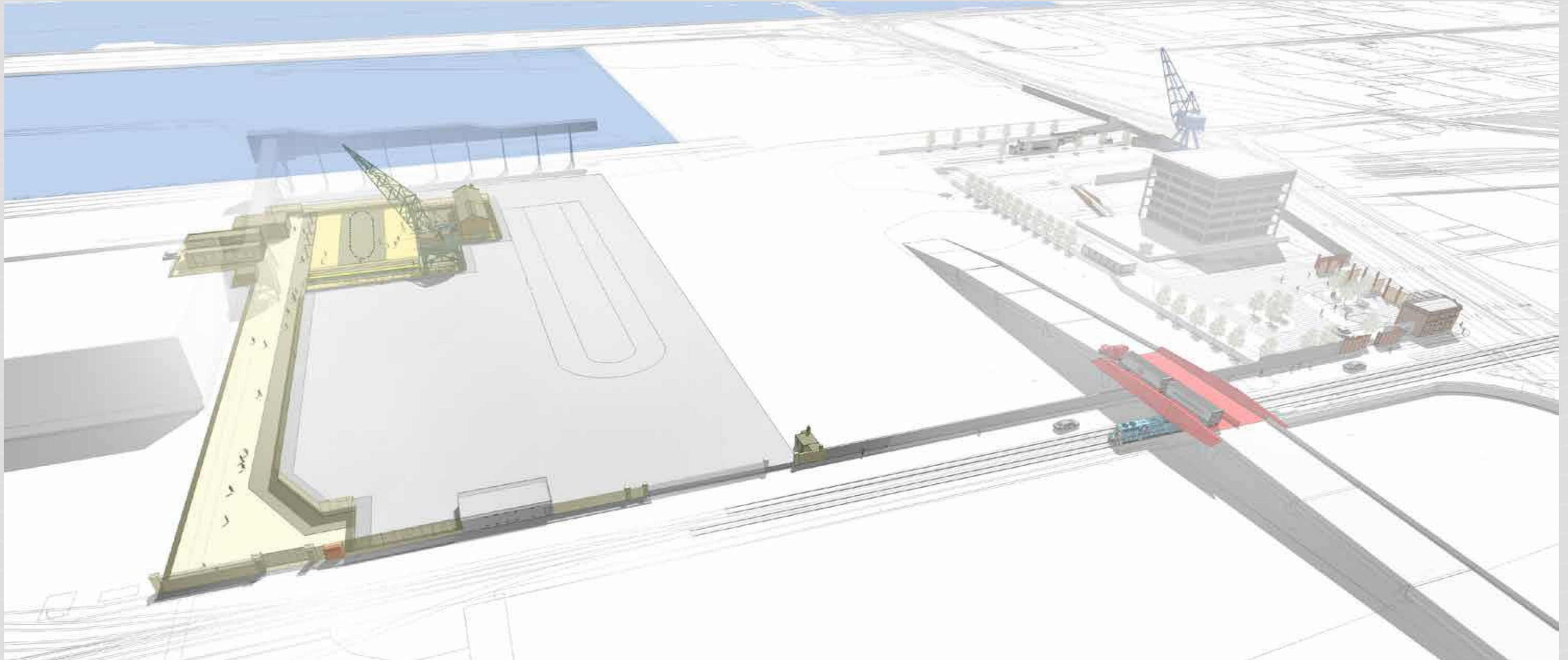


2020
Bitter Like a Lemon
Clare Monnelly's
Bitter Like a Lemon
Anu Production's
Fishamble's
2021
Landmark's
2022
Fishamble's
2023
Pumphouse Connections

Slice the Thief
Charlie's a Clepto
Lepper + Chip
Canaries
Embargo
The Book of Names
Outrage (Deidre Kinahan)

- Also on the Port site is a 2-acre heritage area for events, exhibitions and performances.
- Unique atmosphere of the venue allows local artists to connect with communities through stories of the past and present.
- Workshops and short residencies running throughout 2023, the outputs of which will be exhibited to the public.
- Local school communities to engage with workshops on the theme of 'Port and City'.
- Other workshops to revolve around themes of sustainability, identity and belonging.

The Pumphouse Presents



The Pumphouse Presents



The Pumphouse Presents



The Pumphouse Presents



The Pumphouse Presents



The Pumphouse Presents.



Connections: The Port, the city, arts and Education Names

The Pumphouse Presents



Childrens Workshops

The Pumphouse Presents



National College of Ireland Exhibitions

The Pumphouse Presents



Temporary Pleasure



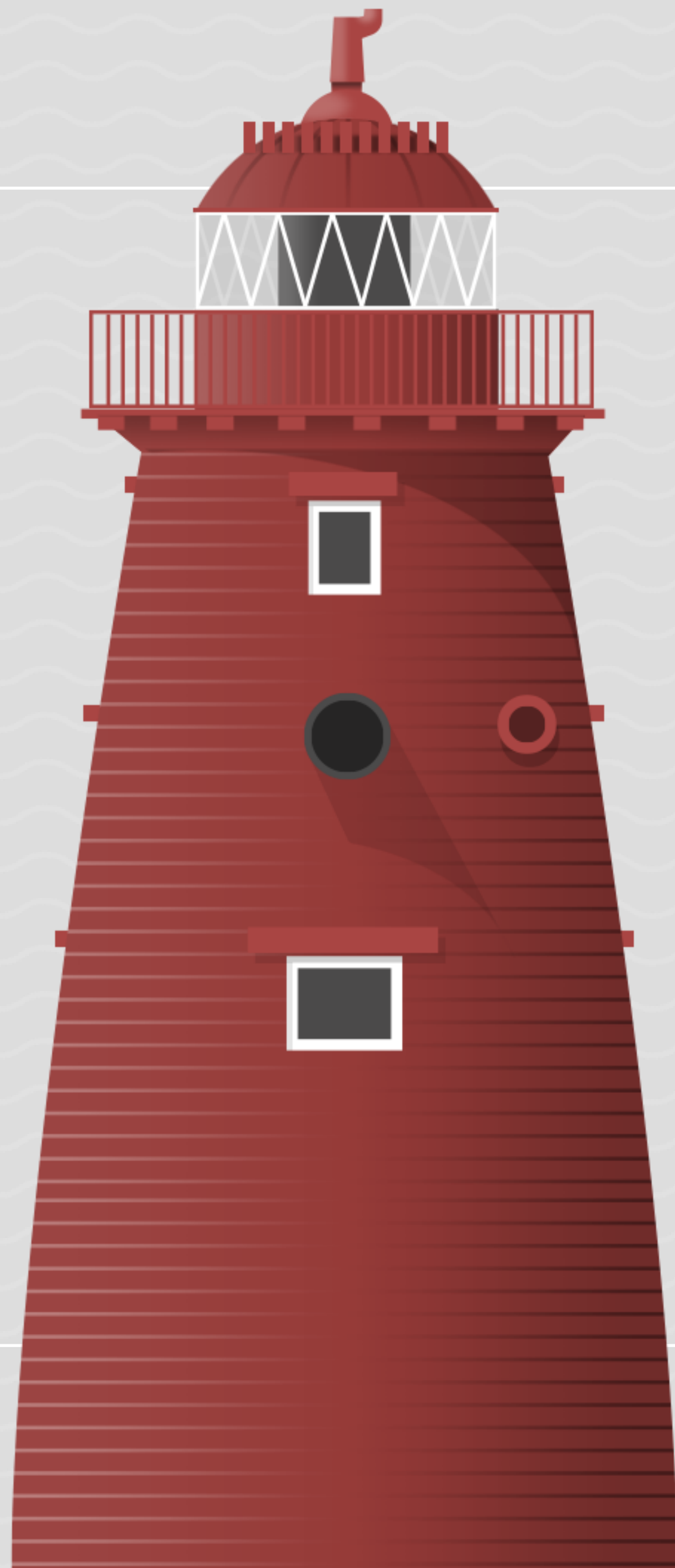
Thank you for listening, if you have any questions, please do contact us.

Thank you to Jim Kelleher, Charlie Murphy, Marta Lopez, Edel Currie, Enda Kavanagh and Peter Maloney photography.

Contact: Lar Joye.

E-mail: ljoye@dublinport.ie

Web site: <http://dublinportarchive.com>



Dublin Port Company

Your Port, Your Future