

UNITED
LOGISTICS



يونائتد
لوجستكس

UNITED LOGISTICS WLL



A QATARI INVESTORS GROUP ENTERPRISE

COMPANY PROFILE

United Logistics WLL P.O. Box : 23112 Doha - State of Qatar
Tel: +974 4033 9600 Fax: + 974 4033 9699

United Logistics WLL has proven track record of successfully executing major transport and lifting operations of heavy and over dimensional cargoes for various projects in the State of Qatar since 2007.

Safe and professional operation has been the hallmark of our project logistics team. Our long and successful stride in the field of project logistics is achieved by the technical expertise and dedicated team work of our staff and management committed to provide top quality services to our clients and contribute in the progress of the nation.

Technical expertise, dedicated team work and professionalism have been our key strengths and the reason for our long and successful stride in the field of project logistics. Among the many project sectors, our clients from industries like Electric Substations, Power Plants, Desalination Plants, Pipe Lines, Refineries, Railways, Airport, Cement Plants, Small Scale Industries have received our services in air and sea freights, customs clearance, transportation of normal, over-dimensional and over-weight goods and associated services like loading, unloading, installation, packing, warehousing, survey, insurance etc.

The staff and management of United Logistics project team endeavors to provide, safe, timely, cost efficient and professional solution for the movement of valued heavy lift cargoes of all our esteemed clients.

A glance at our corporate structure

United Logistics WLL is a subsidiary of **Qatari Investors Group** and operates under the management of **QIG Marine**, the division of Qatari Investors Group [QIG] that handles its functions in the field of shipping, onshore logistics and associated services.

QIG is a leading provider of high quality business, industrial, investment services and products in Qatar which develops new projects in joint-venture partnerships with both international and local companies and suppliers for major projects in Qatar.

QIG is one of the most experienced groups of companies in Qatar, delivering superior returns to clients through cost effective and high value service models. The core portfolio comprises efficiency and business process outsourcing services as well as management.

Management on all levels believe in creating an environment where people desire to work, and where personal accomplishment is aligned with company success. With almost two decades of experience in a wide range of activities QIG is well established in the business world and strives to achieve further success through the different activities of its group of companies providing a wide range of products and services to its customers and aims to provide a large amount of good quality services under one roof.

QIG welcomes investors, partners and associates to work together to create greater coherence in Qatar's economic development whilst emphasizing the importance of coordination between international investors and Qatari businessmen to maximize the promotion, growth and development of the State of Qatar.

Qatar, the pearl of the Arabian Gulf.

State of Qatar is well known in the region and worldwide for her rich cultural heritage, centuries old history of pearl fishing, grand remnants of ancient forts and buildings, hospitable people, economic stability, oil and gas wealth and the safe and promising environment it offers to both nationals and expatriates for working and setting up business and industries and venture into projects in various sectors.

It is estimated the country holds reserves of up to 15 billion barrels of oil and is the world's third largest holder of natural gas reserves.

Qatar, the global leader in LNG production and distribution.

In addition to the growth of oil and gas industry, great emphasis is given by the Government of Qatar towards development of Small and Medium scale industries for further strengthening and diversification of the economy and providing employment opportunities to the nationals and expatriates.

Qatar is one of the leading producers and exporter of petrochemicals eg. LDPE/HDPE, aluminum and high quality steel.

Qatar is appointed to host the 2022 FIFA World Cup Football tournament, In this regard has intensified their spending in infrastructure, stadiums, development of the hotel and tourism industry, Qatar Rail and other facilities for grand organizing of this prestigious sporting event.

State of Qatar

Official Name : State of Qatar
 Capital : Doha
 Population : 2.74 Million
 Official Language : Arabic
 English commonly used as a second language.
 Currency : Qatari Riyal
 Exchange Rate : US\$ 1.00 = QAR 3.6502

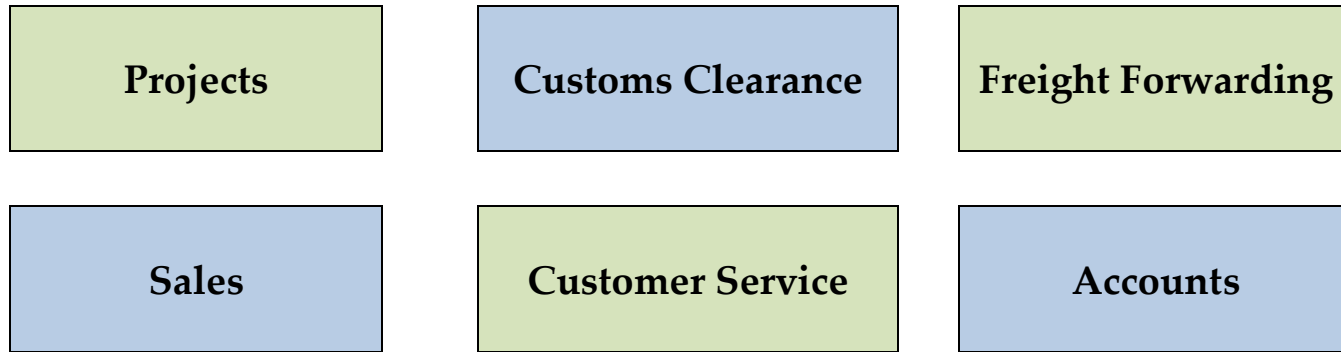
- Free market driven economy
- No government controls on currency transactions
- No restrictions on repatriation of capital and profits
- No corporate tax for GCC firms and personal taxes



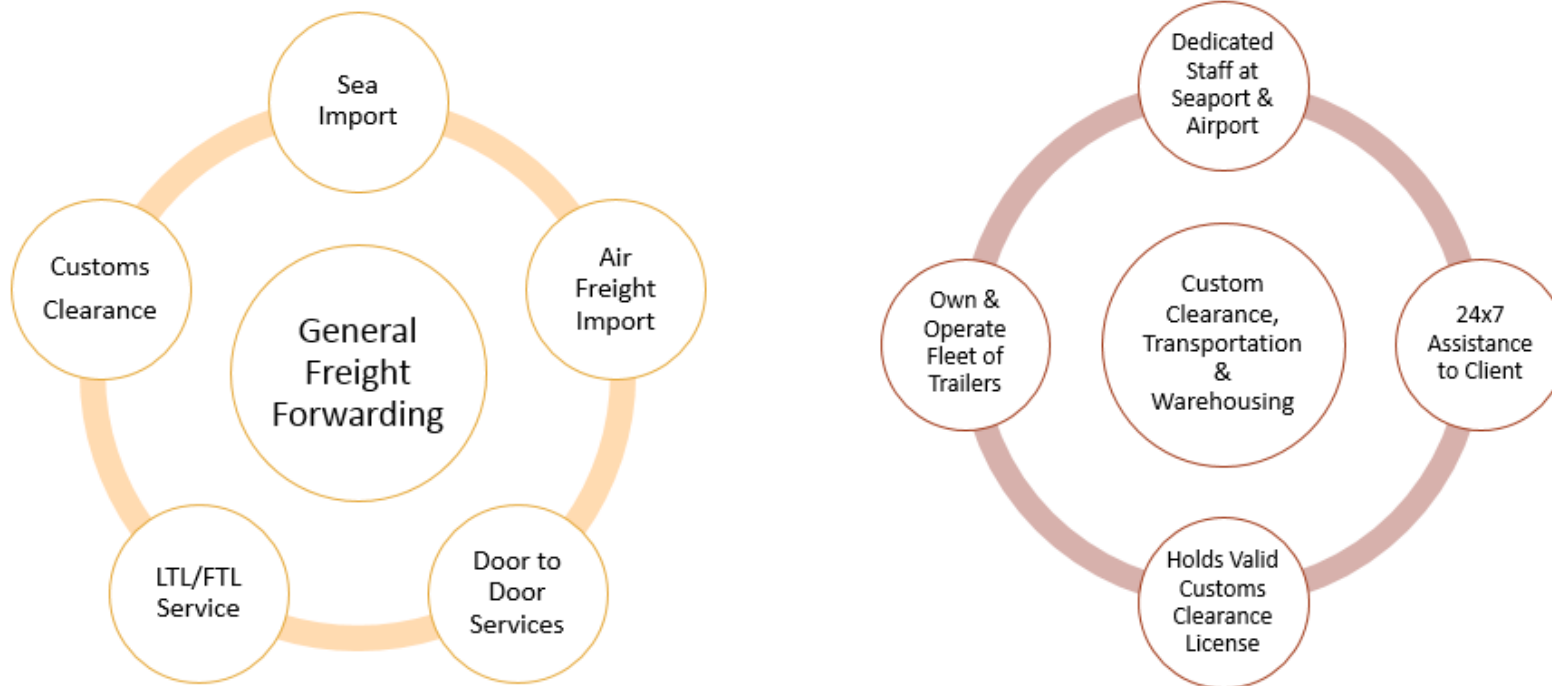
United Logistics WLL – Services And Products

<p>General Freight Forwarding</p>	<ul style="list-style-type: none"> ▪ Full Container Load [FCL] , Less Than Container Load [LCL], Airfreight and Land Transport ▪ Air & Sea Console ▪ Handling Air Charters and Exhibition Cargo ▪ Consultation
<p>Project Freight Forwarding</p>	<ul style="list-style-type: none"> ▪ Project Management ▪ Route / Site Survey, Conventional, Heavy Lifts And Oversize Cargo ▪ Roll On – Roll Off [RO-RO], Tug & Barge Cargo Booking ▪ 24x7 Customer Feedback Cell & Multimodal Transport
<p>Overland Transportation</p>	<ul style="list-style-type: none"> ▪ Full Truckload [FTL], Less Than Truckload [LTL], Pick-up Service in All GCC ▪ Door to door deliveries ▪ Consolidation
<p>Customs Clearance And Delivery</p>	<ul style="list-style-type: none"> ▪ 24x7 Experienced & Skilled Team At Airport, Sea Port & Land Border ▪ Knowledge On Customs regulation and expertise in customs documentation ▪ Fleet Of Standard Flat Bed and Low bed Trailers
<p>Warehousing & Distribution</p>	<ul style="list-style-type: none"> ▪ Open And Closed warehouses ▪ Empty Container Handler for dry Dock ▪ Local Distribution

Departments



Our Strengths



Accreditations :

Certified for Integrated Management System [IMS] for the below standards by Lloyd's Register

ISO 9001:2015 – Quality Management

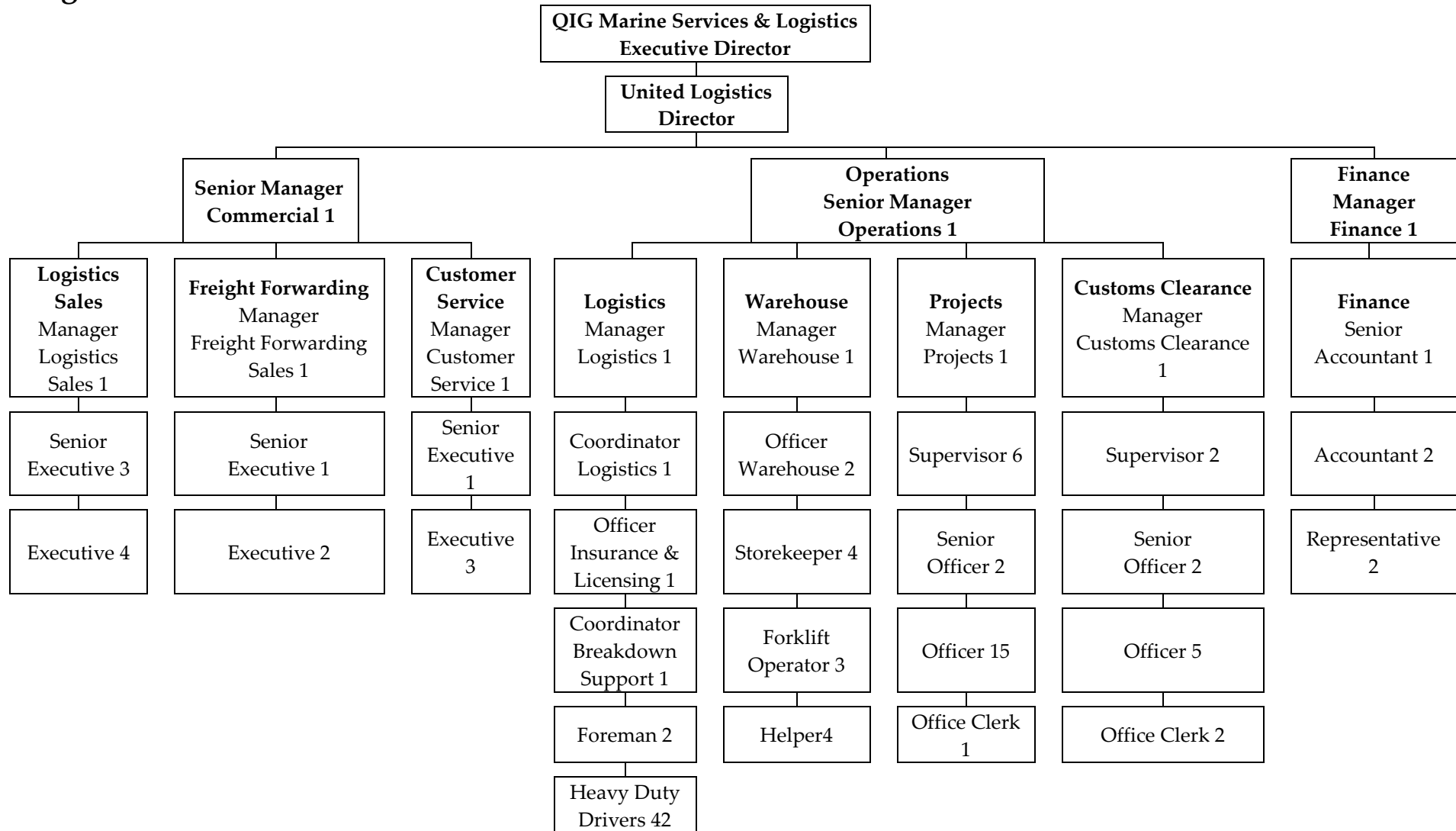
ISO 14001:2015 – Environment Management

ISO 45001:2018 – Occupational Health And Safety Management

Member of International Logistics Network : 'The Cooperative Logistics Network'.



Organization Chart



Project Logistics

- Complete Working Knowledge On Local Procedures
- Advance Logistics Planning For OD Cargo, Heavy Lifts including Route & Site Survey
- Preparation Of Method Statement, Risk Safety Analysis & Schematics Loading Drawings
- Report Management
- Single Focal Point to Client

Logistics Support Offered To Clients In Different Sectors of Industries Like :

- Oil & Gas
- Infrastructure
- Construction
- Pipeline
- Power
- Transport
- Retail Logistics

Photo Album of Some of Our Onshore Logistics Operations

Rail Cars Client : Mitsubishi Corporation.

Transportation and unloading of Rail Cars for Doha Metro Project. Qatar Rail



Transportation and unloading of Rail Cars for Doha Metro Project. Qatar Rail



Long tubes in cases

Transportation of 26 meters long titanium and aluminum brass tubes from Doha port to site at Ras Abu Fontas for QEWC F-039 RAF A2 Desalination Project.

Client : Mitsubishi Corporation.



Receiving of tubes from vessel hook at Doha port and reloading on trailer at Doha port laydown yard for transportation to Ras Abu Fontas

Power Transformers

Excelled in the handling, transportation and installation of more than 500 power transformers across Qatar.

We handled transport and lifting operations of transformers of different weight categories like 45 Tons, 60 Tons, 95 Tons, 115 Ton, 135 Tons, 160 Tons, 180 Tons and 200 Tons.



180 ton power transformer being taken into substation site on hydraulic multi axle trailer.



Transformer on beams kept on hydraulic jacks for installation by jacking and skidding process.

Power Transformers



Installation of power transformer on foundation by crawler crane



Setting of transformer on foundation.

Power Transformers



Locking of transformer wheel on the center line of the foundation by nuts and bolts.



Lifting power transformer from trailer by mobile crane

Power Transformers



Installation of power transformer on foundation by mobile crane



Setting of transformer on foundation.

Ship's Propeller

Transportation of ship's for client Nakilat Keppel Offshore Services. Propeller measuring Length 7972 MM x Width 7054 MM x Width 1550 MM and Weight 32 Tons



Propeller on multi axle trailer

Cable drums

Transportation and unloading of cable drums have been handled for different clients like Siemens Ltd, Larsen & Toubro Ltd, Marubeni Corporation, Taihan Electric Wire Co. and ETA Star International Co. for various expansion projects of **KAHRAMAA (Qatar General Electricity & Water Corporation)** from Phase III to Phase XII.



Cable drum on low bed trailer at Doha port.



Cable drum lashed on trailer with steel chains.

Cable drums



Unloading at site.



Cable drum lined up at site.

Over dimensional vessels

Over dimensional vessel HDS Reactor of length 36.60 meters and weighing 376.70 tons of our client Samsung Engineering Co Ltd being transported on MSPM from Ras Laffan port to Qatar Gas Co's site in Ras Laffan Industrial City for **Laffan Refinery Diesel Hydrotreater Project**.



Receiving 36.6 meter long 376.70 Tons HDS Reactor on direct delivery from vessel hook to MSPM



Transportation to site on MSPM

Over dimensional vessels



MSPM with HDS Reactor entering site



MSPM with HDS Reactor positioned near lifting area for installation at site

Pipes

Lifting and transport operations of gas and liquid supply pipes.



Trailers with gas pipes on steel cradles lined up outside laydown site in Dukhan for unloading



Being unloaded by crane using teflon coated pipe hooks

Pipes



DI pipes being loaded into container



DI pipe bundles being loaded into container

Kiln shells

Transportation of over dimensional Kiln Shells on multi axle trailers for Al Khaleej Cement Plant's construction project in Umm Bab. Our clients : FLSmidth A/S, Denmark and CNBM (China National Building Materials).



Multi axle trailers with Kiln shells entering site at Umm Bab, Qatar

Heavy Air Cargo

Loading and transportation of 65 tons gear box that arrived at Doha airport on cargo aircraft Antonov. Cargo shipped by Wikov Gear S.R.O. Czech Republic from Prague to Doha airport which was delivered to Al Jabor Cement Industries, Mesaieed, Qatar.



65 Tons gear box being brought out from the cargo flight Antonov at Doha airport.



Gear box slowly skid down the tracks laid from inside the aircraft to the tarmac.

DEL - Export Gas Compression Facilities Upgrade Project – Ras Laffan



HRSG Modules : 4.48 M x 5.20 M x 4.70 M - 71 Tons
 GT Skids : 15.00 M x 5.20 M x 4.30 M - 68 Tons
 Compressors : 13.00 M x 4.50 M x 4.50 M - 99 Tons



Nakilat Ship Repair Yard

Customs Clearance & Transportation on Direct Delivery Of
FBE Coated Pipes and Steel Structures



Qatar Petroleum Offshore Drilling

Freight Arrangement, offloading of Carbon Steel Pipes,
Reloading and Stacking at QP offshore warehouse at Ras
Laffan and Dukhan



Barzan Petrochemical Complex

Freight Contract For Container Shipments including Special
Equipment and Hazardous Cargo



Information On Ports In Qatar

Hamad Port



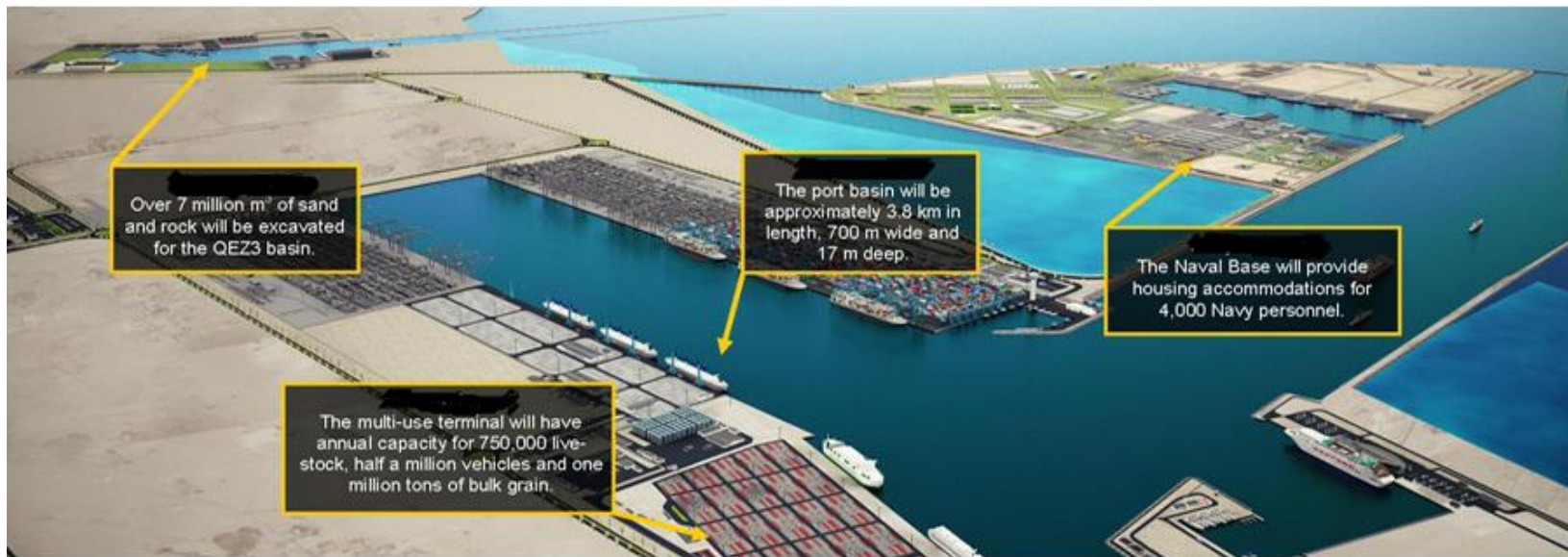
New port project facts :- Became operational end of 2016

The new port site stretches over 26 KM².capacity of multi-use terminals :

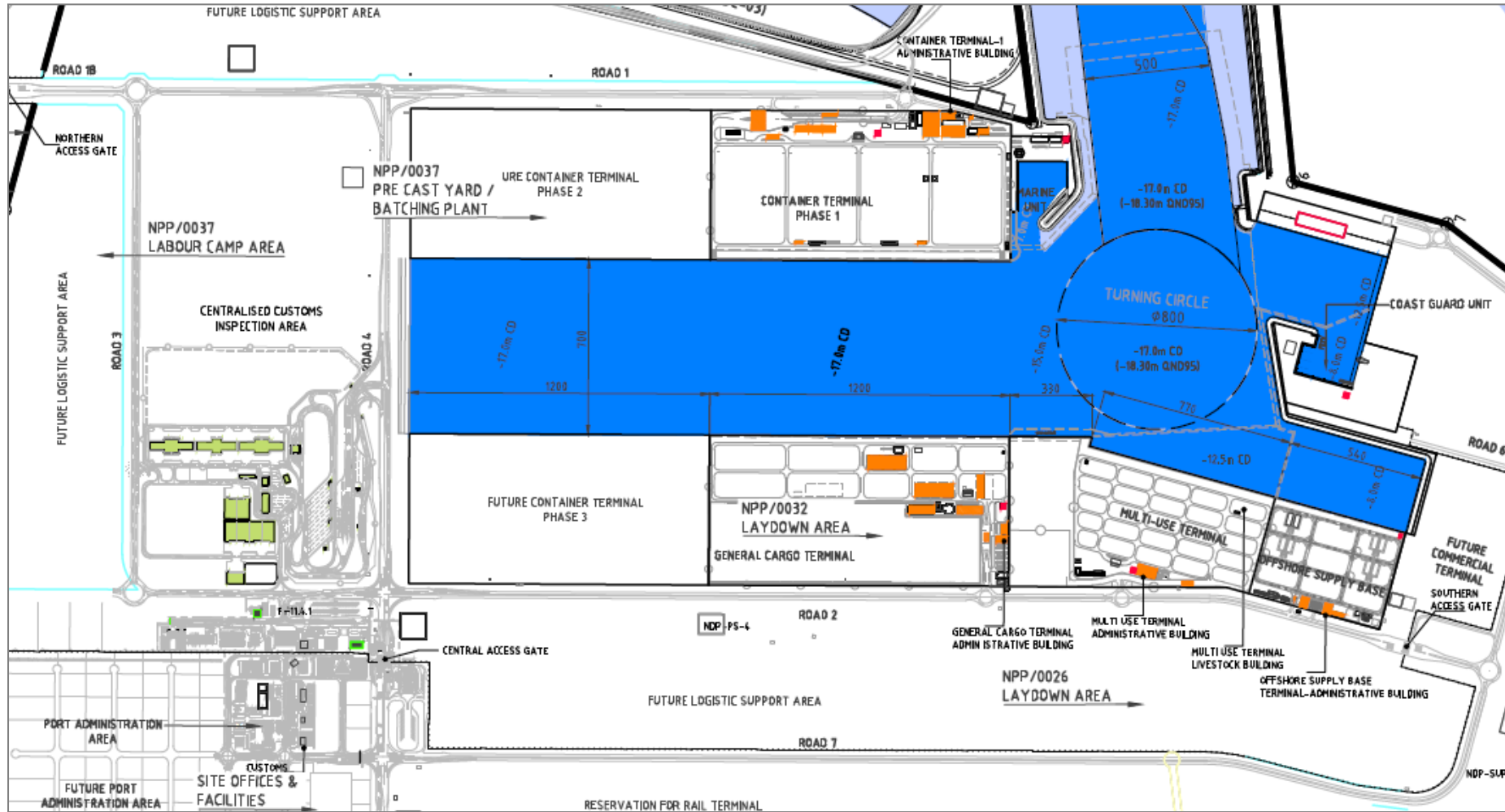
General cargo	1.7 Million tonnes per year.
Grain facility	1 Million tonnes per year.
Vehicle terminal	500,000 Vehicles per year.
Livestock	37,500 Tonnes per year.
Container terminal	Capacity to handle 2 Millions TEU's P.A.

Hamad Port

The port basin is approximately 3.8KM in length, 700M wide and 17M deep. In total, 70 Million M³ of granular material will be excavated; enough to fill 25,000 Olympic-size swimming pools.



Hamad port layout



MESAIEED INDUSTRIAL PORT OF QATAR



**DISCHARGE OF CEMENT /
AGGREGATES / PROJECT
CARGO**

**LOADING FOR
PETROCHEMICALS
PRODUCTS, UREA,
SULPHUR, ALUMINUM /
STEEL PRODUCTS**

RAS LAFFAN PORT

Berth No	Max. draft	Pier strength
CB 101 (Selpker/Cement berth)	12.5MTRS	N/A
CB 102 (DRY CARGO BERTH)	12.5MTRS	3MT PER SQ.MTRS
CB 103 (DRY CARGO BERTH)	12.5MTRS	3MT PER SQ.MTRS
CB 104 (RO-RO BERTH)	7.5 MTRS	5MT PER SQ.MTRS
CB 105 (DRY CARGO BERTH)	8.5MTRS	3MT PER SQ.MTRS
CB 106 (DRY CARGO BERTH)	8.5MTRS	3MT PER SQ.MTRS
CB 107 (RO-RO) BERTH	8.5MTRS	3MT PER SQ.MTRS



Al-Ruwais Port

Al-Ruwais Port is the second commercial port. Located at the northern tip of Qatar.

- The port handles general cargoes, foodstuff and other commodities.
- Suitable as gateway for fresh frozen and commodities from neighboring countries.
- Channel depth : 5 meters
- New docks are built at 7 meters depth
- 6 marine berths constructed at a combined total length of 1414 meters
- The navigation channel and port docks will be further expanded and dredged to reach 10 meters depth during the final stage of Al-Ruwais Port upgrade project. This will facilitate the entry of all small and medium ships and cruise ships.



Major Projects – Completed

No.	Projects Executed	Client	Commodity	Scope of Work
1	Qatar Rail Mock Up for Gold Line Station	Mitsubishi Corp Vantec-Hitachi Transport System	Mock Up of Rail Cars	Customs clearance. Warehousing, Transportation and Installation
2	Al Khaleej Cement Plant Phase II	China National Building Material Company International China FLSmidth A/S, Denmark	Equipment and plant machinery	Onshore services including customs clearance and transportation
3	Qatar Power Transmission System Expansion Phase VI	ABB	Transformers and accessories	Customs clearance, transportation, unloading, Installation of transformers on foundations
4	New Doha International Airport	Cimolai	Steel structures	Customs clearance, transportation, offloading on direct delivery basis.
5	GTC/543/B/2012/KAHRAMAA/DOHA	Electrosteel Co.	DI Pipes	Customs clearance and transportation
6	KHARAMA Phase VIII Substation Package S-3-1	Larsen & Toubro	Transformers and accessories	Custom clearance, transportation, unloading of materials and Equipment, placement of power transformers on its foundation at project site.
7	PROJECT -GTC 241 , EZDAN Residential Project of Kharamaa	Siemens	Transformers and accessories, switchgears and SCS Equipment	Custom clearance, transportation, unloading of materials and Equipment, placement of power transformers on its foundation at project site.

Major Projects – Completed

No.	Projects Executed	Client	Commodity	Scope of Work
8	KHARAMA Phase VIII Substation Package S-3-2	Hyundai Engineering	Transformers and accessories	Custom clearance, transportation, unloading of materials and equipment, placement of power transformers on its foundation at project site.
9	GTC/30/2002 GTC/13/2003 GTC/21/2004 PHASE V / VI	Siemens Ltd	Transformers, accessories, switchgears	Custom clearance, transportation, unloading of materials and Equipment, placement of power transformers on its foundation at project site.
10	New Doha International Airport	Qatar Dredging	Equipment	Customs clearance,(normal and temporary import) transportation, direct and indirect delivery basis.
11	KAHRAMA Phase VII	Siemens Ltd	Cable drums	Customs clearance, transportation, offloading on direct and indirect delivery basis.
12	KAHRAMA Phase VIII GTC/142/2006	Taihan	Cable drums	Customs clearance, transportation, offloading on direct and indirect delivery basis.
13	KHARAMA Phase IX	Hyosung Corporation	Transformers and accessories	Custom clearance, transportation, unloading of materials and Equipment, placement of power transformers on its foundation at project site.
14	KHARAMA Phase IX EHV Power Cables Package C-2, C-4 & C-5	Siemens Ltd.	Cable drums	Custom clearance, transportation.

Major Projects – Completed

No.	Projects Executed	Client	Commodity	Scope of Work
15	KHARAMA Phase IX Substation Package S-1,S-4, S-5 & S-6	Siemens Ltd.	Transformers and accessories	Custom clearance, transportation, unloading of materials and equipment, placement of power transformers on its foundation at project site.
16	EPIC for electrical & telecom utilities for support services area Ph I & II and west extension for QP, Ras Laffan.	Larsen & Toubro	Transformers and accessories	Custom clearance, transportation, unloading of materials and equipment, placement of power transformers on its foundation at project site.
17	KHARAMA Phase X Substation Package C-3	Larsen & Toubro	Cable drums	Custom clearance, transportation, unloading at project site.
18	Dukhan Gas Sweetening Project	Petrofac Int'l Ltd/Qatar Petroleum	L SAW Pipes	Loading, unloading and transportation of pipes. (18000 CBM pipes) on direct delivery basis ex- Mesaieed port to Dukhan.
19	Laffan Refinery Diesel Hydrotreater (DHT)	Laffan Refinery Co. Ltd., for Samsung Eng. & Co Ltd	Equipment and materials	Custom clearance, transportation.
20	RAF A2 Desalination Plant project	Mitsubishi Corporation	Equipment and materials	Customs clearance, transportation.
21	RAF A2 Desalination Plant project	Toyo Thai Corporation	Equipment and materials	Customs clearance, transportation.
22	Qatar Foundation Education City Convention Center	Baytur Construction & Contracting Co.	Steel structures	Sea freight, customs clearance and transportation
23	LAB Project	Daewoo Engineering	Plant and machinery	Customs clearance and transportation

Major Projects – Completed

No.	Projects Executed	Client	Commodity	Scope of Work
24	Precast Cement Modules Manufacturing Facilities	REDCO Group WLL	Cement bags on pallets	Customs clearance, transportation of cargo from under vessel's hook to project site.
25	QEZ Desalination Project Transmission Pipelines	Sinohydro Corporation	DI Pipes, Fitting	Onshore services including customs clearance and transportation
26	GTC 626/2014E Construction of Mega Reservoir PRPSs (Package E), Abu Nakhla	M/s China Gezhouba Group (CGGC) & Burhan JV	Equipment and plant machinery	Custom clearance, transportation, unloading of materials and equipment, at project site
27	Construction of the Red and Green Lines of Doha Metro's Depots.	Ms Fujita Corporation	Equipment and plant machinery	Custom clearance, transportation, unloading of materials and equipment, at project site
28	Dolphin Energy Ltd Export Gas Compression Upgrade Project	Larsen & Toubro Ltd	Equipment and plant machinery	Onshore services including customs clearance and transportation
29	East Corridor P011	China Harbour Engineering Co.	Pipes and construction materials	Onshore services including customs clearance and transportation
30	Barzan Petrochemical Complex	JGC Corporation	Equipment and plant machinery	Onshore services including customs clearance and Transportation
31	KAHRAMAA – Qatar Transmission phase 11	National Contracting Company	Cable drums	Onshore services including customs clearance and transportation
32	NSRP Complex Project, Vietnam	JGC Corporation	Pipes	Freight arrangements – 650x40 HC
33	Qatar Rail Pedestrian Subway	Linter SAFI Poland	Equipment, pipes and materials	Customs clearance, transportation and unloading.
34	QPMC Gabbro Terminal Expansion	China National Building Material Company International	Equipment and plant machinery	Onshore services including customs clearance and transportation
35	RAF A3 Desalination Plant project	ACCIONA Agua S.A. Spain	Equipment and materials	Customs clearance, transportation.

Major Projects – Completed

No.	Projects Executed	Client	Commodity	Scope of Work
36	Umm Al Houl Water & Power Project	Hitachi Zosen Corporation Japan	Equipment and materials	Customs clearance, transportation.
37	Umm Al Houl Water & Power Project	ACCIONA Agua S.A. Spain	Equipment and materials	Customs clearance, transportation.
38	Al Bayt Stadium	Cimolai/Liburas	Steel Structures	Customs clearance and transportation

Major Projects – Ongoing

No.	Projects Executed	Client	Commodity	Scope of Work
1	Doha Metro : Qatar Rail Rolling Stock	Mitsubishi Corp Vantec-Hitachi Transport System	Rail Cars : Rolling Stock	Customs clearance, transportation and unloading of Rail Cars
2	KHARAMA Phase XII Substation Package	Siemens WLL.	Transformers and accessories	Custom clearance, transportation, unloading of materials and Equipment, placement of power transformers on its foundation at project site.

UNITED
LOGISTICS



يونائتد
لوجستكس

Thank You