

SHIPPING, FORWARDING & LOGISTICS meet INDUSTRY

Milano, 30/31 Gennaio 2020

Continentale e Marittimo: un mix possibile?

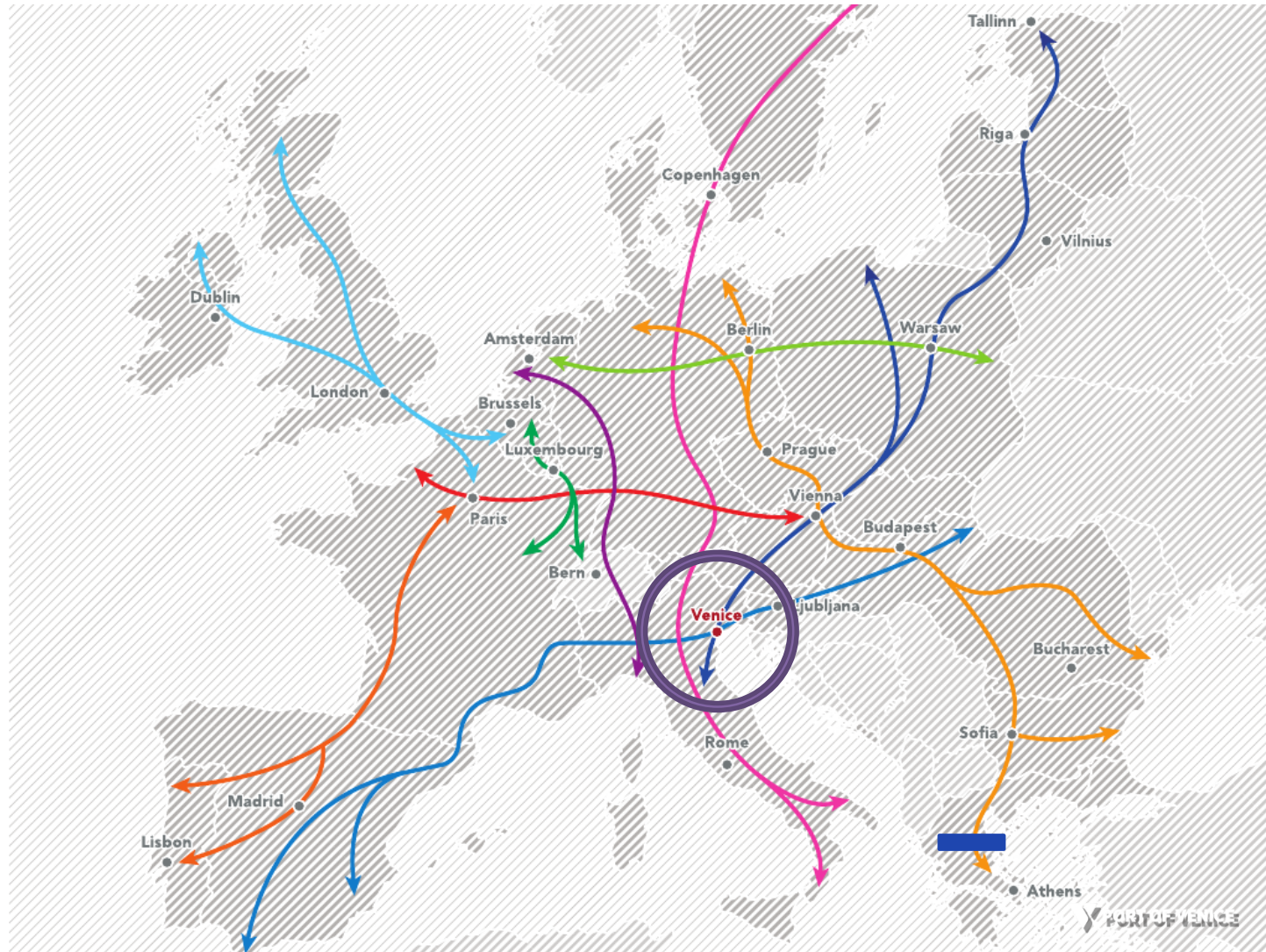


Competitività e competizione dei corridoi logistici

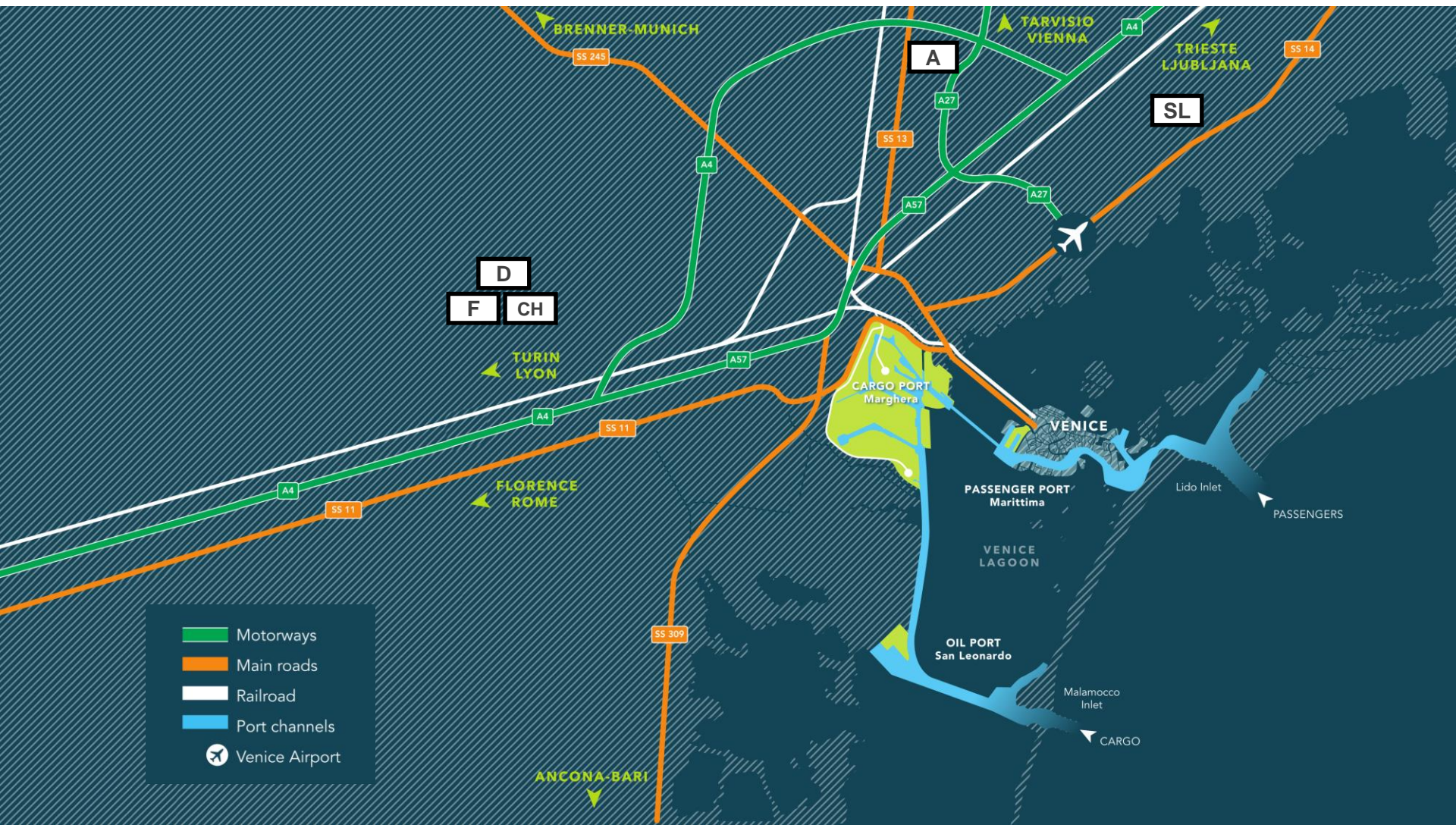
Porto, interporti, ferrovie e strade come reti e connessioni di sistema e come attori economici

Where are we? At the crossing of 3 Ten-T Corridors

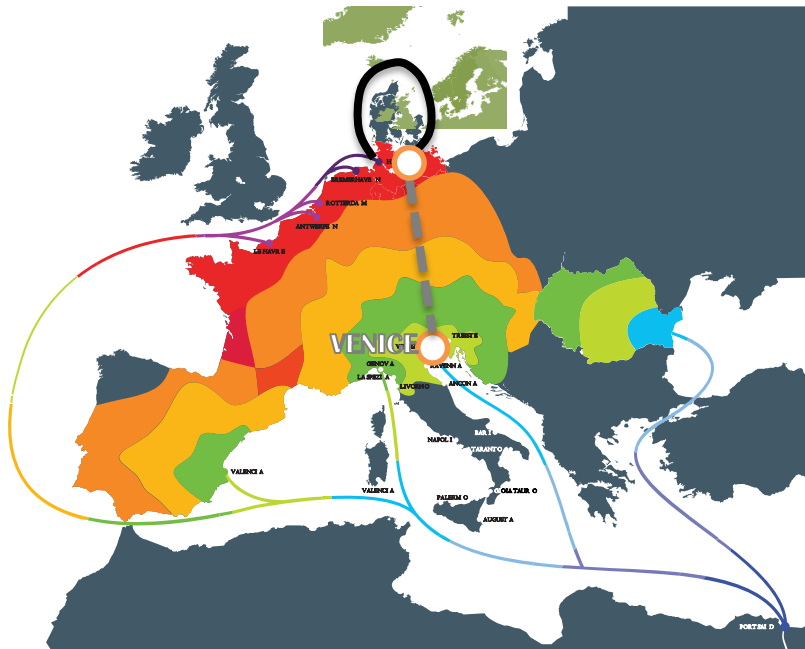
- Helsinki-Valletta
- Mediterranean
- **Baltic-Adriatic**



Where are we? At the middle of top-notch roads and rails



THE GREENEST MEDITERRANEAN-NORTH EUROPE LINK

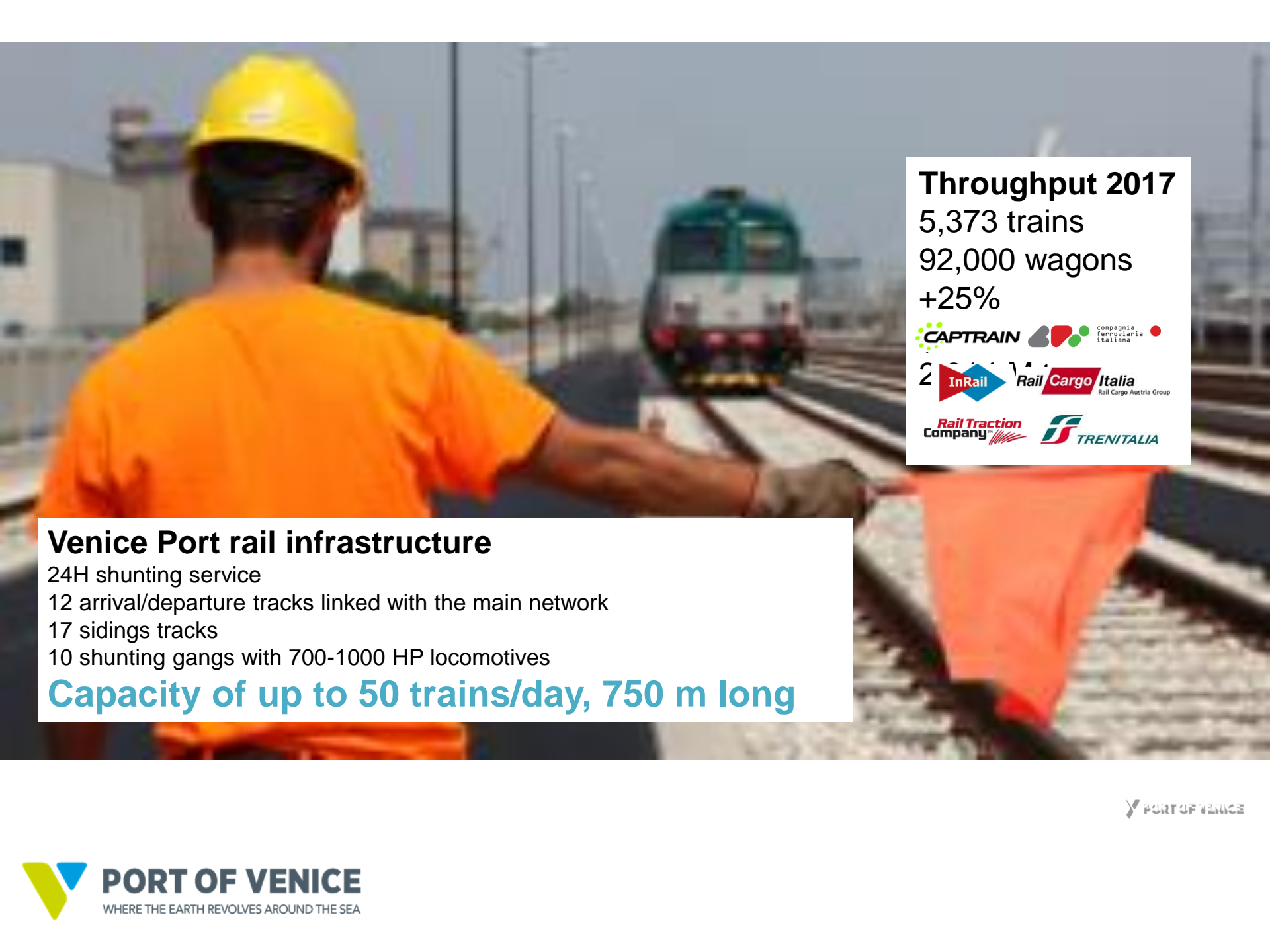


Linking the Mediterranean and the North Europe via a maritime service or by road haulage can emit great quantities of greenhouse gases (GHG) in the atmosphere. **The rail service between the ports of Central/Northern Europe and Venice represents the most sustainable solution for linking the two basins**

A MULTIPURPOSE PORT

Container, Project Cargo, RinDry Bulg, Liquid Bulk, Agribulk





Throughput 2017

5,373 trains

92,000 wagons

+25%



Venice Port rail infrastructure

24H shunting service

12 arrival/departure tracks linked with the main network

17 sidings tracks

10 shunting gangs with 700-1000 HP locomotives

Capacity of up to 50 trains/day, 750 m long

Intermodal service to **Rostock** via Treviso

weekly regular service



Distanza tra porto e Terminal

